



BAYTOWNE SHOPPES
 907 W. MARKETVIEW DR. STE 8
 CHAMPAIGN, IL 61822
 SQUARE FOOTAGE: ±1,500
 UNIT 7

EXISTING CONSTRUCTION

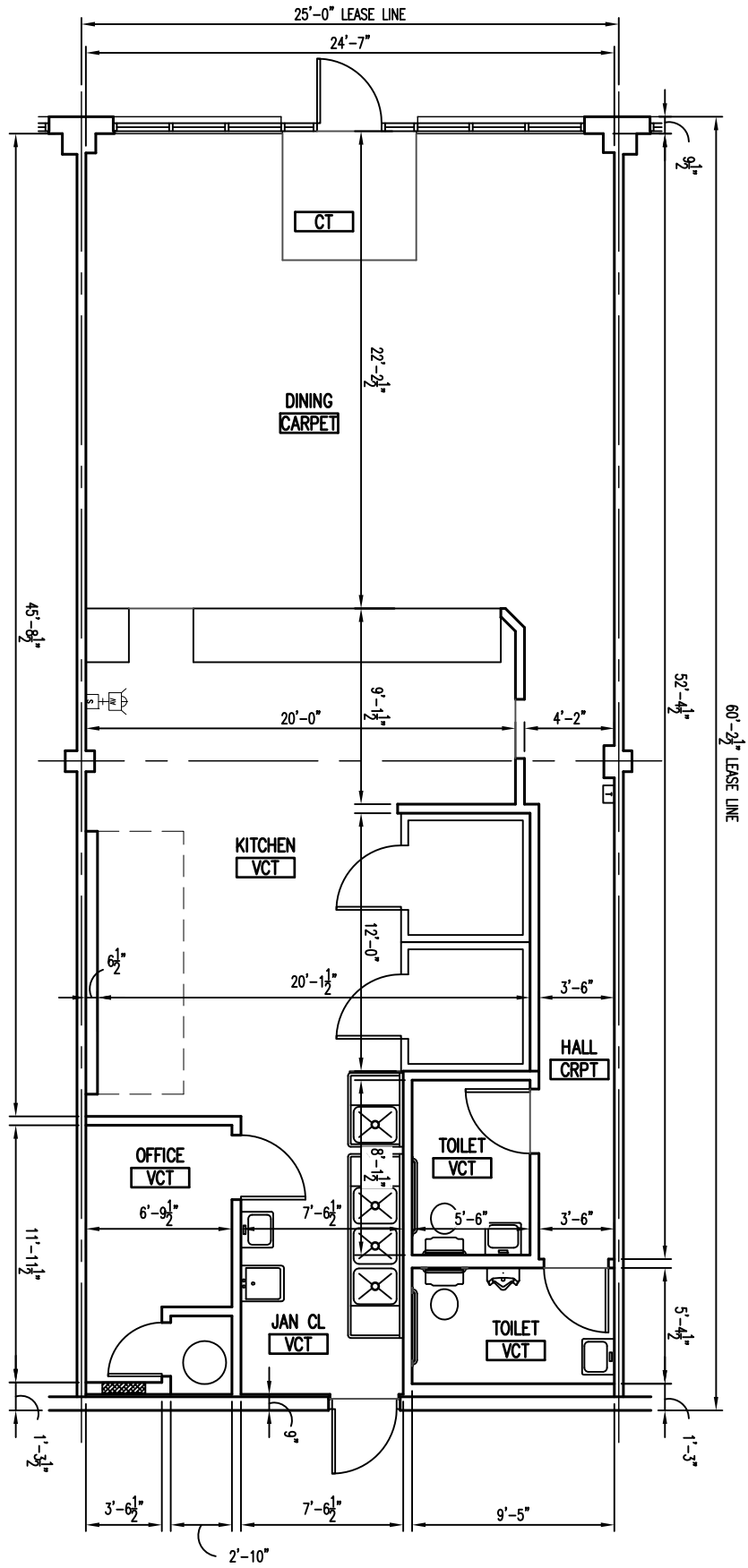
FRONT: ALUM. STOREFRONT ASSEMBLY
 (1" GLASS) / GYP. BD.
 ON MTL. FRAMING OVER MASONRY
 SIDES: 1 HR. GYP. BD. DEMISING WALL
 REAR: GYP. BD. ON MTL. FRAMING OVER CMU

DINING/KITCHEN/OFFICE:
 OUTLETS & TELE/DATA
 (MISC. LOCATIONS)
 RECESSED 2x4 FLUORESCENT & PENDANT
 INCANDESCENT
 2x4 CEILING TILE & GRID
 FINISHES:
 FRP, PAINT, WD WAINSCOT & VINYL BASE

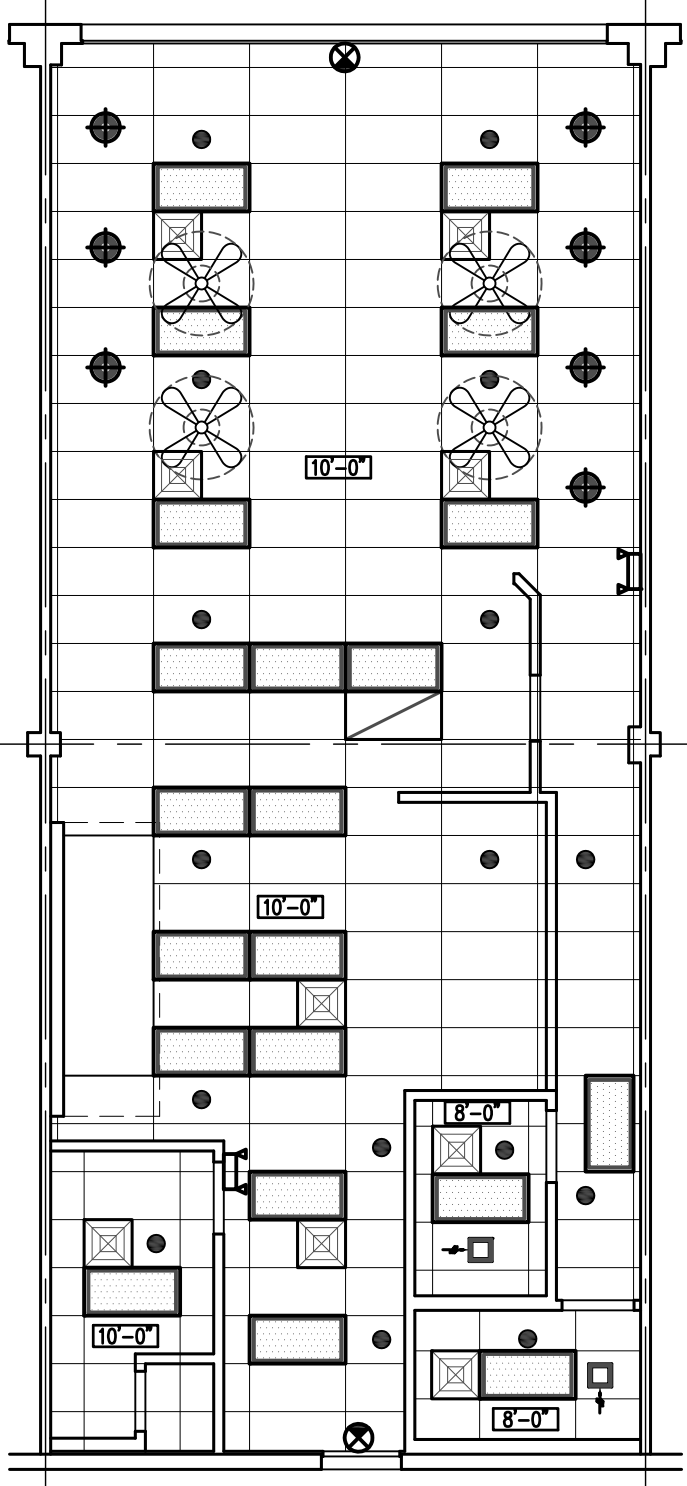
TOILETS (PRE-2010-ADA):
 2x4 CEILING TILE & GRID
 RECESSED 2x4 FLUORESCENT
 LAVATORY / URINAL
 WATER CLOSET
 EXHAUST FAN
 FINISHES:
 PAINT & VINYL BASE

ELECTRICAL
 200A 120/208V, 3Ø 4W 42 CKT PANEL

WATER SERVICE: 1"Ø MIN.



FLOOR PLAN
 SCALE: 1/8" = 1'-0"



CEILING PLAN
 SCALE: 1/8" = 1'-0"

LEGEND

	FLUORESCENT LIGHT FIXTURE		SPRINKLER HEAD
	BATTERY PACK EMERGENCY FIXTURE		THERMOSTAT
	EXIT SIGN		POWER PANEL
	TOILET EXHAUST FAN		DIFFUSER / REGISTER
	DOWNLIGHT FIXTURE		F.A. DEVICES

