



WOODFIELD COMMONS EAST

1225A E. GOLF RD.
 SCHAUMBURG, IL 60173
 SQUARE FOOTAGE: ±1,200
 UNIT 4

EXISTING CONSTRUCTION

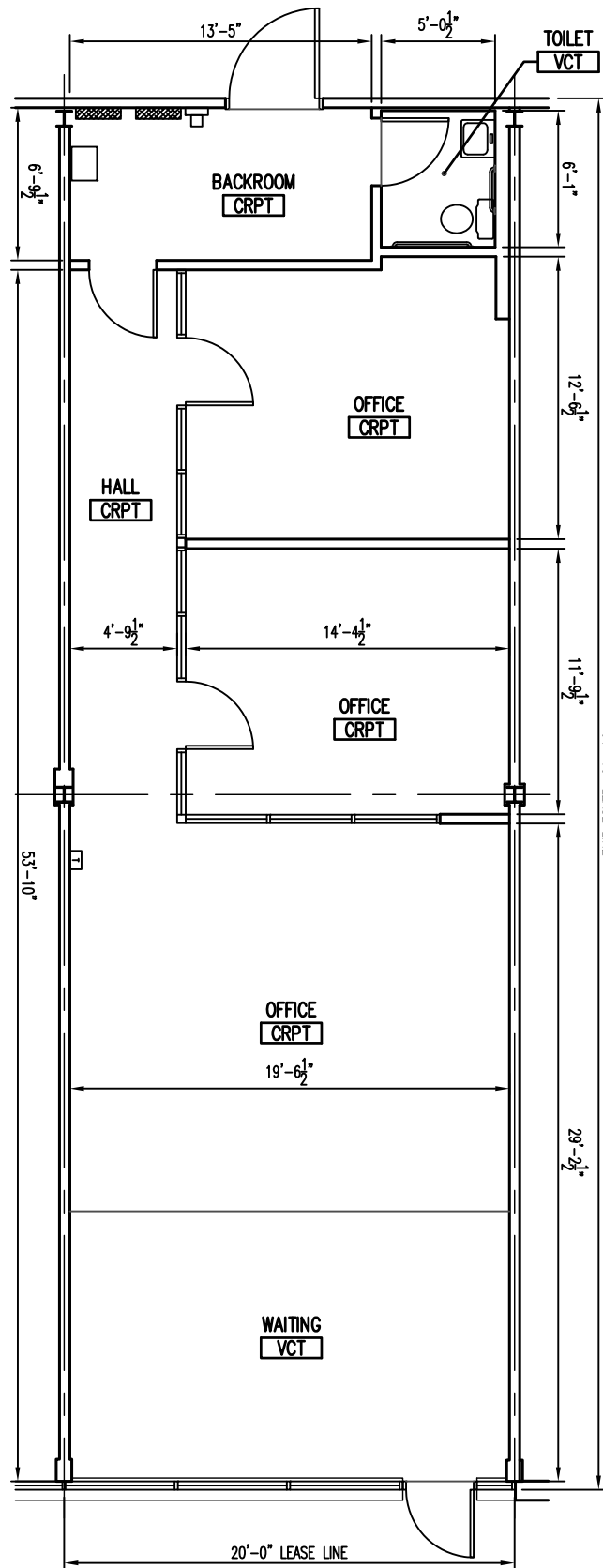
FRONT: ALUM. STOREFRONT ASSEMBLY
 (1/4" GLAZING)/ GYP. BD. OVER
 MTL. FRAMING OVER TILE
 SIDES: 1 HR. GYP. BD. DEMISING WALL
 REAR: PAINTED PRECAST

OFFICES:
 2x4 RECESSED FLUORESCENT FIXTURES
 2x4 CEILING TILE & GRID (SPECIALTY
 2ND LOOK TILE)
 FINISHES:
 PAINT & VINYL BASE

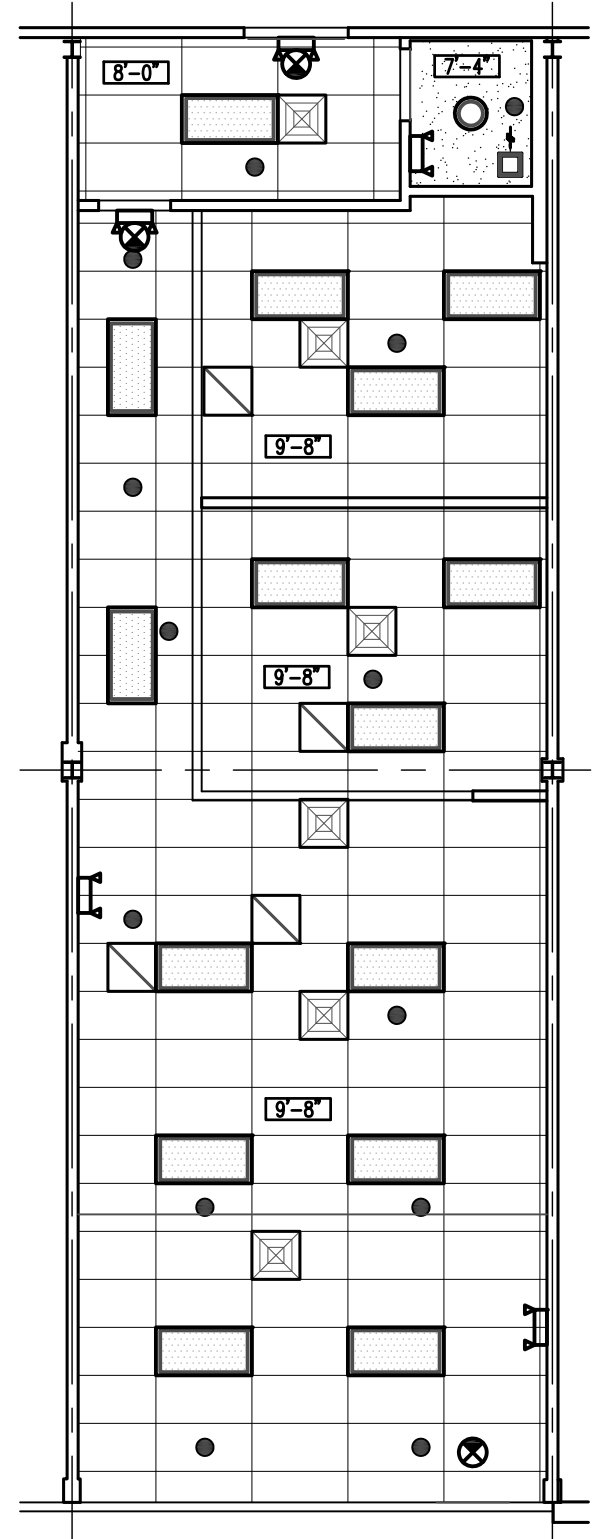
TOILET (PRE-2010 ADA):
 GYP. BD. CEILING
 LAVATORY
 WATER CLOSET
 SURFACE MTD LIGHT
 EXHAUST FAN
 FINISHES:
 PAINT & VINYL BASE

ELECTRICAL
 100A 277/480V, 3Ø
 4W 24 BRKR PANEL
 45 KVA STEP DN TRANSFORMER
 150A 120/208V, 3Ø
 4W 42 BRKR PANEL

WATER SERVICE: 3/4"Ø



FLOOR PLAN
 SCALE: 1/8" = 1'-0"



CEILING PLAN
 SCALE: 1/8" = 1'-0"

LEGEND

	FLUORESCENT LIGHT FIXTURE		SPRINKLER HEAD
	BATTERY PACK EMERGENCY FIXTURE		THERMOSTAT
	EXIT SIGN		POWER PANEL
	TOILET EXHAUST FAN		DIFFUSER / REGISTER
	DOWNLIGHT FIXTURE		F.A. DEVICES

GRAPHIC SCALE

