



# RetailCenters

## MAPLE PARK PLACE

263 N. WEBER RD  
 BOLINGBROOK, IL 60490  
 SQUARE FOOTAGE: 1,400  
 UNIT 17

### EXISTING CONSTRUCTION

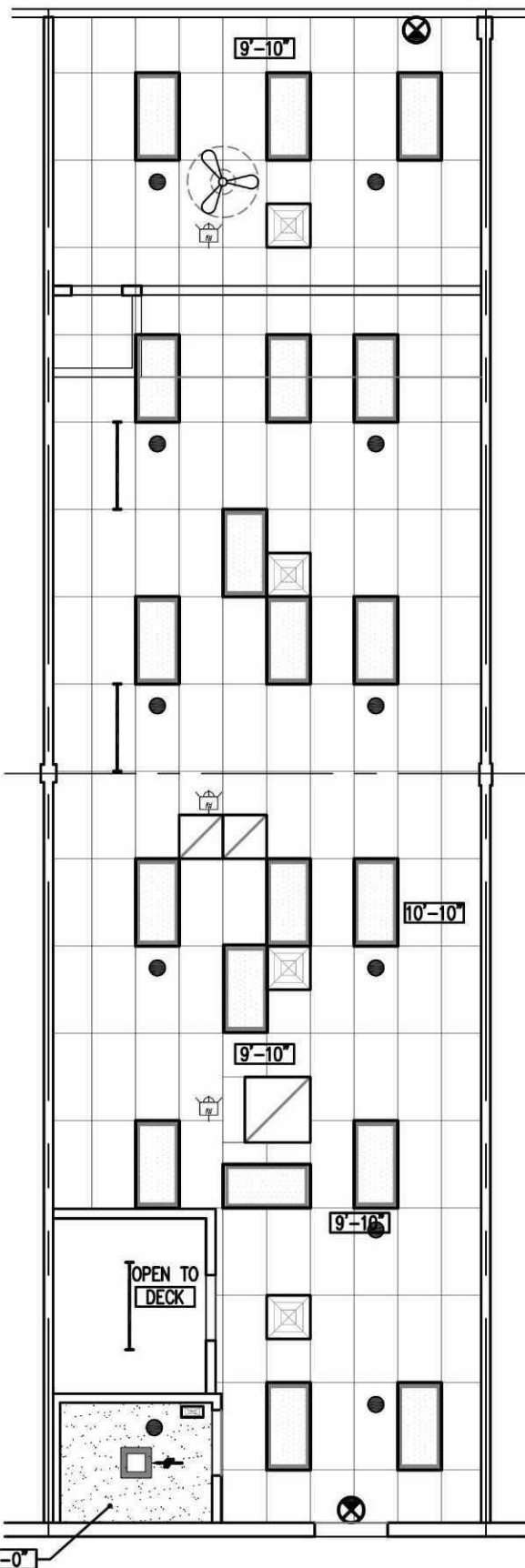
FRONT: ALUM. STOREFRONT ASSEMBLY (1/4" GLASS)  
 SIDES: 1 HR. GYP. BD. DEMISING WALL  
 REAR: PAINTED CMU

SALES/BREAK/OFFICE:  
 OUTLETS & TELE/DATA (MISC. LOCATIONS)  
 2x4 RECESSED FLUORESCENT FIXTURES  
 2x4 CEILING TILE & GRID  
 FINISHES: PAINT, VINYL BASE

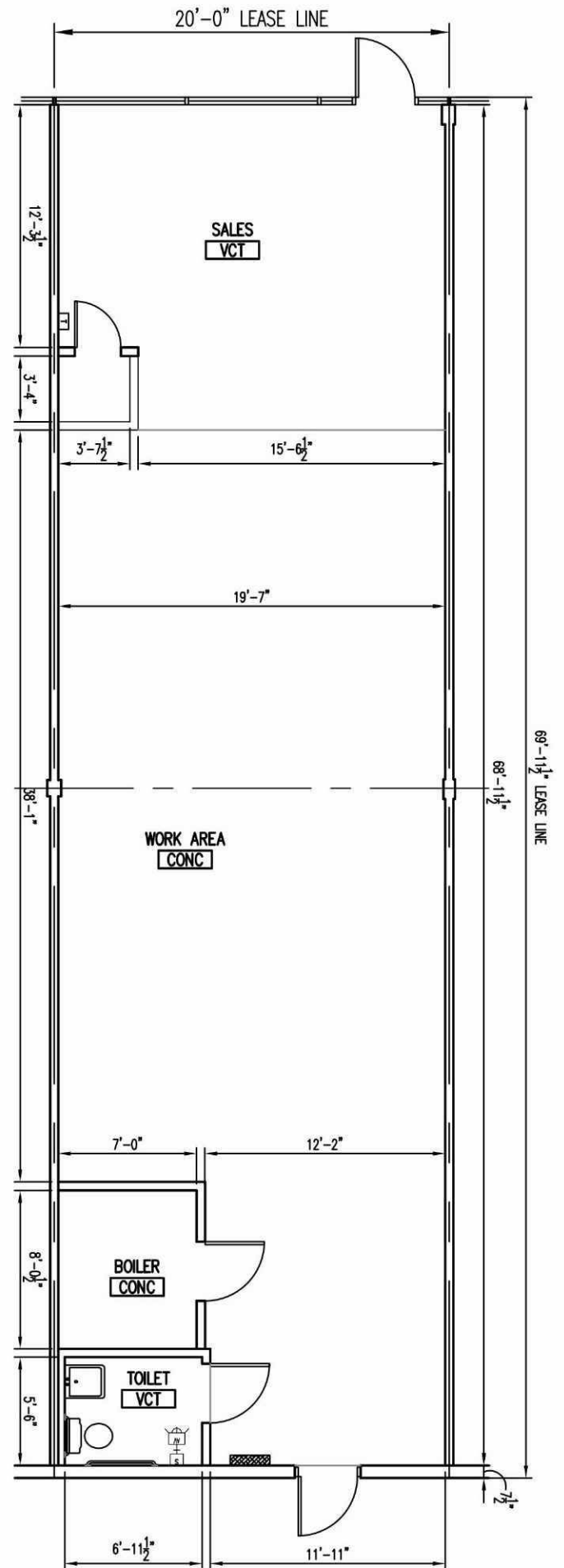
TOILETS (2010 ADA):  
 2x4 RECESSED FLUORESCENT FIXTURE  
 2x4 CEILING TILE & GRID  
 LAVATORY WATER CLOSET  
 EXHAUST FAN  
 FINISHES: PAINT & VINYL BASE

ELECTRICAL  
 100A 120/208V, 3Ø  
 4W 30 BRKR PANEL

WATER SERVICE 3/4"Ø



**CEILING PLAN**  
 SCALE: 1/8" = 1'-0"



**FLOOR PLAN**  
 SCALE: 1/8" = 1'-0"

LEGEND			
	FLUORESCENT LIGHT FIXTURE		SPRINKLER HEAD
	BATTERY PACK EMERGENCY FIXTURE		THERMOSTAT
	EXIT SIGN		POWER PANEL
	TOILET EXHAUST FAN		DIFFUSER / REGISTER
	DOWNLIGHT FIXTURE		F.A. DEVICES

