

Westgate
 Lat.: 41.459712 Long.: -81.850711
 Ring: 1 mile radius

IRC Demographics
 Latitude: 41.45971
 Longitude: -81.85071

Summary	Census 2010	2018	2023
Population	14,154	14,578	14,523
Households	7,058	7,289	7,293
Families	3,660	3,689	3,663
Average Household Size	2.00	2.00	1.99
Owner Occupied Housing Units	4,601	4,332	4,382
Renter Occupied Housing Units	2,457	2,957	2,911
Median Age	45.0	47.2	48.7
Trends: 2018 - 2023 Annual Rate	Area	State	National
Population	-0.08%	0.25%	0.83%
Households	0.01%	0.27%	0.79%
Families	-0.14%	0.13%	0.71%
Owner HHs	0.23%	0.45%	1.16%
Median Household Income	2.12%	2.15%	2.50%

Households by Income	2018		2023	
	Number	Percent	Number	Percent
<\$15,000	706	9.7%	593	8.1%
\$15,000 - \$24,999	625	8.6%	529	7.3%
\$25,000 - \$34,999	860	11.8%	734	10.1%
\$35,000 - \$49,999	1,072	14.7%	1,008	13.8%
\$50,000 - \$74,999	1,379	18.9%	1,437	19.7%
\$75,000 - \$99,999	752	10.3%	826	11.3%
\$100,000 - \$149,999	971	13.3%	1,115	15.3%
\$150,000 - \$199,999	522	7.2%	571	7.8%
\$200,000+	401	5.5%	480	6.6%
Median Household Income	\$55,045		\$61,129	
Average Household Income	\$79,939		\$91,596	
Per Capita Income	\$39,223		\$45,162	

Population by Age	Census 2010		2018		2023	
	Number	Percent	Number	Percent	Number	Percent
0 - 4	716	5.1%	654	4.5%	640	4.4%
5 - 9	734	5.2%	694	4.8%	664	4.6%
10 - 14	791	5.6%	741	5.1%	700	4.8%
15 - 19	764	5.4%	738	5.1%	675	4.6%
20 - 24	545	3.9%	796	5.5%	682	4.7%
25 - 34	1,711	12.1%	1,491	10.2%	1,676	11.5%
35 - 44	1,813	12.8%	1,759	12.1%	1,568	10.8%
45 - 54	2,056	14.5%	1,919	13.2%	1,810	12.5%
55 - 64	1,872	13.2%	2,121	14.6%	2,002	13.8%
65 - 74	1,327	9.4%	1,738	11.9%	1,960	13.5%
75 - 84	1,209	8.5%	1,133	7.8%	1,315	9.1%
85+	616	4.4%	793	5.4%	831	5.7%

Race and Ethnicity	Census 2010		2018		2023	
	Number	Percent	Number	Percent	Number	Percent
White Alone	13,271	93.8%	13,422	92.1%	13,376	92.1%
Black Alone	280	2.0%	332	2.3%	337	2.3%
American Indian Alone	17	0.1%	19	0.1%	19	0.1%
Asian Alone	308	2.2%	414	2.8%	405	2.8%
Pacific Islander Alone	3	0.0%	6	0.0%	6	0.0%
Some Other Race Alone	99	0.7%	142	1.0%	141	1.0%
Two or More Races	175	1.2%	243	1.7%	240	1.7%
Hispanic Origin (Any Race)	384	2.7%	552	3.8%	548	3.8%

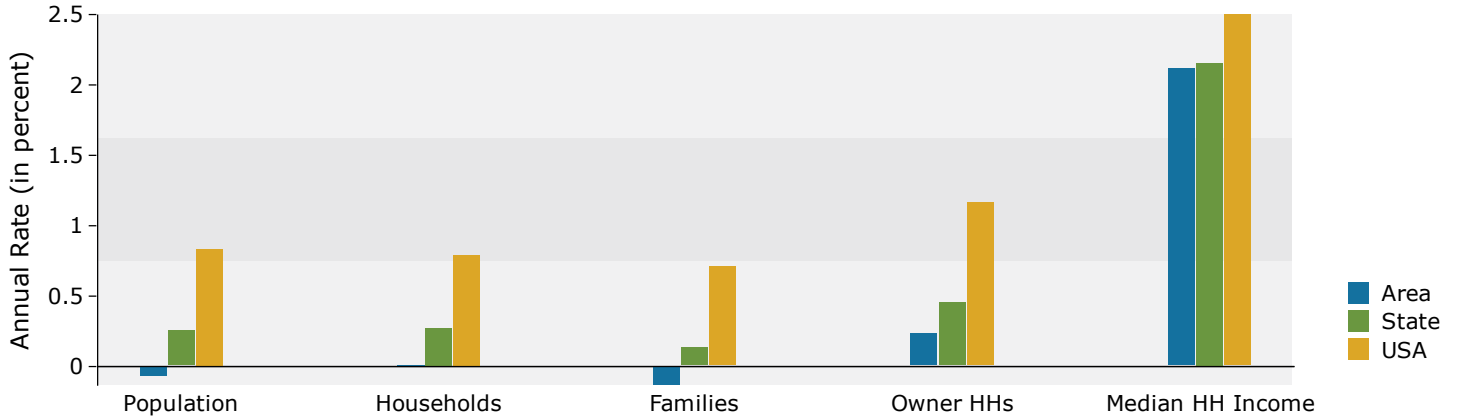
Data Note: Income is expressed in current dollars.

Source: U.S. Census Bureau, Census 2010 Summary File 1. Esri forecasts for 2018 and 2023.

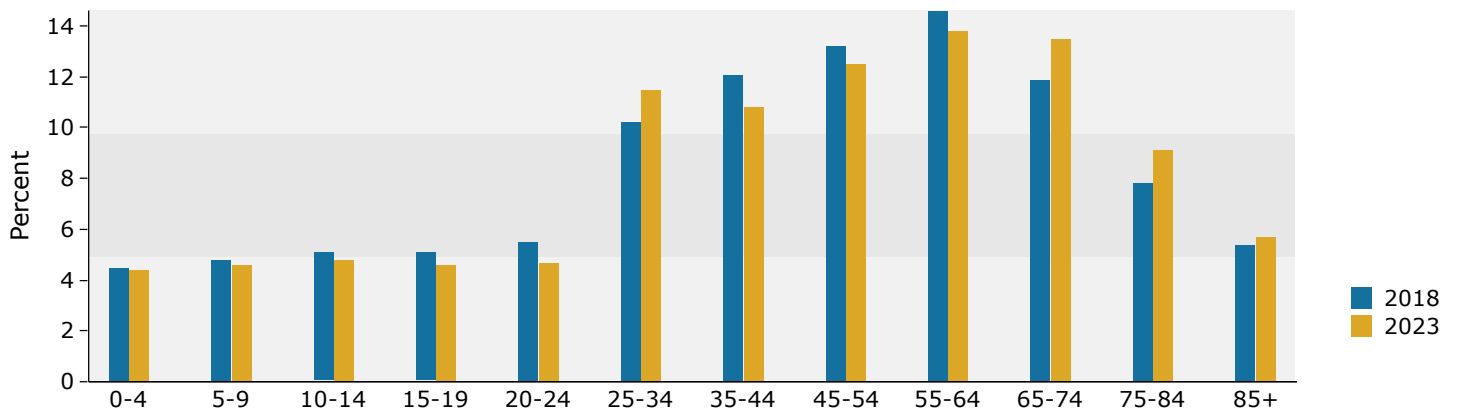
Westgate
 Lat.: 41.459712 Long.: -81.850711
 Ring: 1 mile radius

IRC Demographics
 Latitude: 41.45971
 Longitude: -81.85071

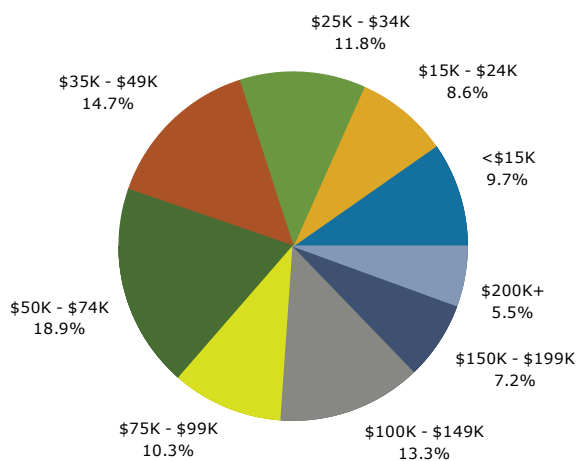
Trends 2018-2023



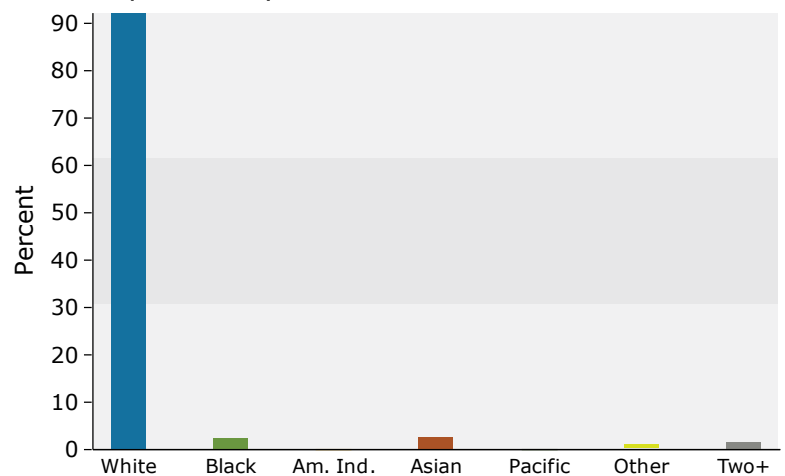
Population by Age



2018 Household Income



2018 Population by Race



2018 Percent Hispanic Origin: 3.8%

Source: U.S. Census Bureau, Census 2010 Summary File 1. Esri forecasts for 2018 and 2023.

Westgate
 Lat.: 41.459712 Long.: -81.850711
 Ring: 3 mile radius

IRC Demographics
 Latitude: 41.45971
 Longitude: -81.85071

Summary	Census 2010	2018	2023
Population	102,918	101,278	99,733
Households	46,014	45,659	45,183
Families	26,049	25,279	24,838
Average Household Size	2.22	2.20	2.19
Owner Occupied Housing Units	31,626	29,393	29,361
Renter Occupied Housing Units	14,388	16,266	15,822
Median Age	41.0	42.8	43.5
Trends: 2018 - 2023 Annual Rate	Area	State	National
Population	-0.31%	0.25%	0.83%
Households	-0.21%	0.27%	0.79%
Families	-0.35%	0.13%	0.71%
Owner HHs	-0.02%	0.45%	1.16%
Median Household Income	2.11%	2.15%	2.50%

Households by Income	2018		2023	
	Number	Percent	Number	Percent
<\$15,000	4,272	9.4%	3,528	7.8%
\$15,000 - \$24,999	3,886	8.5%	3,200	7.1%
\$25,000 - \$34,999	4,196	9.2%	3,550	7.9%
\$35,000 - \$49,999	6,283	13.8%	5,826	12.9%
\$50,000 - \$74,999	9,142	20.0%	9,176	20.3%
\$75,000 - \$99,999	5,875	12.9%	6,231	13.8%
\$100,000 - \$149,999	6,696	14.7%	7,647	16.9%
\$150,000 - \$199,999	2,722	6.0%	2,998	6.6%
\$200,000+	2,586	5.7%	3,028	6.7%
Median Household Income	\$59,000		\$65,498	
Average Household Income	\$81,668		\$93,183	
Per Capita Income	\$37,008		\$42,410	

Population by Age	Census 2010		2018		2023	
	Number	Percent	Number	Percent	Number	Percent
0 - 4	5,950	5.8%	5,268	5.2%	5,152	5.2%
5 - 9	5,968	5.8%	5,522	5.5%	5,239	5.3%
10 - 14	6,196	6.0%	5,691	5.6%	5,461	5.5%
15 - 19	5,818	5.7%	5,360	5.3%	5,059	5.1%
20 - 24	4,994	4.9%	5,743	5.7%	5,201	5.2%
25 - 34	14,256	13.9%	12,786	12.6%	13,312	13.3%
35 - 44	14,005	13.6%	13,072	12.9%	12,413	12.4%
45 - 54	15,993	15.5%	13,649	13.5%	12,438	12.5%
55 - 64	13,418	13.0%	14,705	14.5%	13,675	13.7%
65 - 74	7,782	7.6%	10,545	10.4%	11,936	12.0%
75 - 84	5,750	5.6%	5,705	5.6%	6,638	6.7%
85+	2,787	2.7%	3,229	3.2%	3,207	3.2%

Race and Ethnicity	Census 2010		2018		2023	
	Number	Percent	Number	Percent	Number	Percent
White Alone	93,305	90.7%	89,790	88.7%	88,380	88.6%
Black Alone	4,285	4.2%	4,671	4.6%	4,655	4.7%
American Indian Alone	174	0.2%	178	0.2%	177	0.2%
Asian Alone	2,052	2.0%	2,582	2.5%	2,518	2.5%
Pacific Islander Alone	23	0.0%	32	0.0%	31	0.0%
Some Other Race Alone	1,194	1.2%	1,562	1.5%	1,542	1.5%
Two or More Races	1,886	1.8%	2,463	2.4%	2,429	2.4%
Hispanic Origin (Any Race)	4,021	3.9%	5,367	5.3%	5,289	5.3%

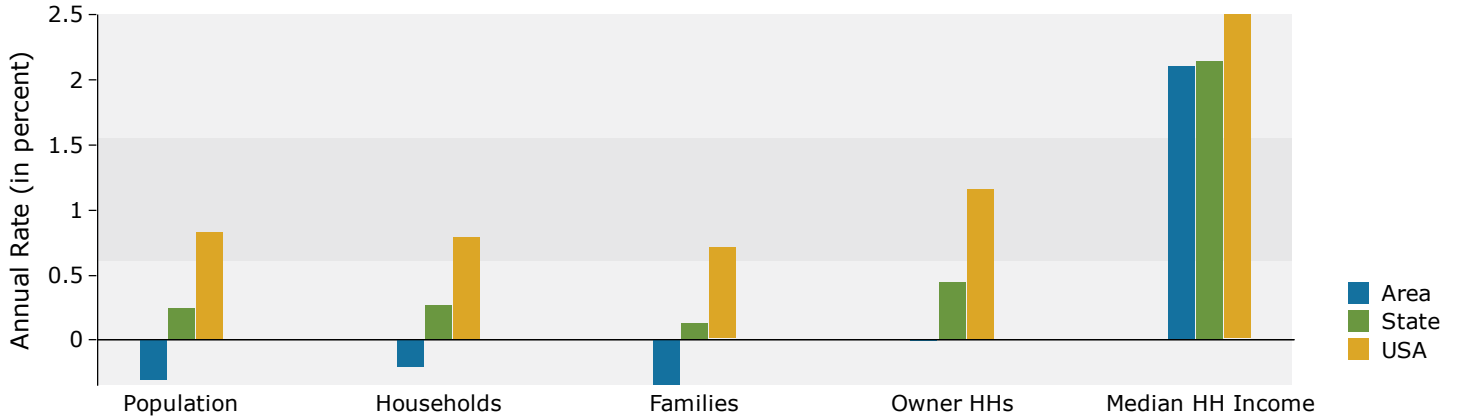
Data Note: Income is expressed in current dollars.

Source: U.S. Census Bureau, Census 2010 Summary File 1. Esri forecasts for 2018 and 2023.

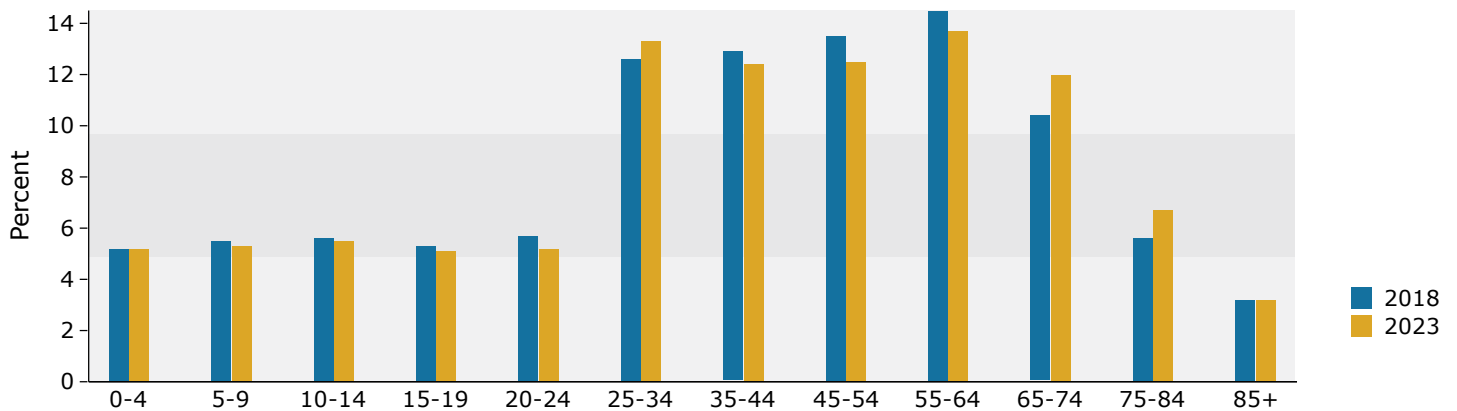
Westgate
 Lat.: 41.459712 Long.: -81.850711
 Ring: 3 mile radius

IRC Demographics
 Latitude: 41.45971
 Longitude: -81.85071

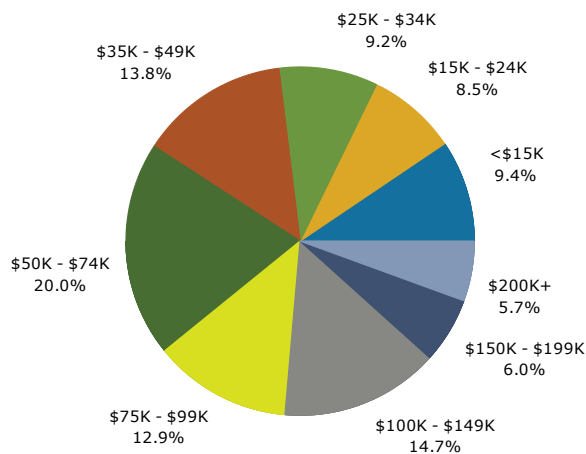
Trends 2018-2023



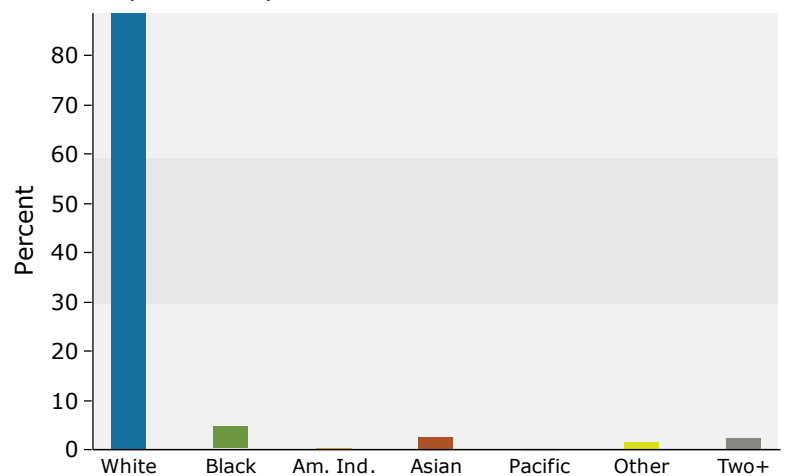
Population by Age



2018 Household Income



2018 Population by Race



2018 Percent Hispanic Origin: 5.3%

Source: U.S. Census Bureau, Census 2010 Summary File 1. Esri forecasts for 2018 and 2023.

Demographic and Income Profile

Westgate
 Lat.: 41.459712 Long.: -81.850711
 Ring: 5 mile radius

IRC Demographics
 Latitude: 41.45971
 Longitude: -81.85071

Summary	Census 2010	2018	2023
Population	228,043	224,918	221,918
Households	101,319	100,758	99,896
Families	55,931	54,383	53,517
Average Household Size	2.23	2.21	2.20
Owner Occupied Housing Units	62,979	58,216	58,227
Renter Occupied Housing Units	38,340	42,542	41,669
Median Age	39.8	41.5	42.3
Trends: 2018 - 2023 Annual Rate	Area	State	National
Population	-0.27%	0.25%	0.83%
Households	-0.17%	0.27%	0.79%
Families	-0.32%	0.13%	0.71%
Owner HHs	0.00%	0.45%	1.16%
Median Household Income	1.89%	2.15%	2.50%

Households by Income	2018		2023	
	Number	Percent	Number	Percent
<\$15,000	11,908	11.8%	10,045	10.1%
\$15,000 - \$24,999	10,109	10.0%	8,485	8.5%
\$25,000 - \$34,999	10,155	10.1%	8,819	8.8%
\$35,000 - \$49,999	14,723	14.6%	13,930	13.9%
\$50,000 - \$74,999	19,665	19.5%	20,207	20.2%
\$75,000 - \$99,999	11,966	11.9%	12,934	12.9%
\$100,000 - \$149,999	12,643	12.5%	14,541	14.6%
\$150,000 - \$199,999	4,844	4.8%	5,369	5.4%
\$200,000+	4,747	4.7%	5,566	5.6%
Median Household Income	\$53,076		\$58,296	
Average Household Income	\$73,495		\$83,903	
Per Capita Income	\$33,131		\$37,974	

Population by Age	Census 2010		2018		2023	
	Number	Percent	Number	Percent	Number	Percent
0 - 4	13,183	5.8%	11,854	5.3%	11,674	5.3%
5 - 9	13,411	5.9%	12,213	5.4%	11,701	5.3%
10 - 14	14,102	6.2%	12,657	5.6%	12,070	5.4%
15 - 19	13,606	6.0%	12,422	5.5%	11,688	5.3%
20 - 24	12,571	5.5%	13,741	6.1%	12,684	5.7%
25 - 34	32,560	14.3%	30,150	13.4%	30,886	13.9%
35 - 44	31,051	13.6%	29,246	13.0%	28,168	12.7%
45 - 54	35,367	15.5%	30,290	13.5%	27,712	12.5%
55 - 64	28,525	12.5%	31,968	14.2%	30,108	13.6%
65 - 74	16,251	7.1%	22,123	9.8%	25,138	11.3%
75 - 84	11,720	5.1%	11,772	5.2%	13,713	6.2%
85+	5,695	2.5%	6,482	2.9%	6,376	2.9%

Race and Ethnicity	Census 2010		2018		2023	
	Number	Percent	Number	Percent	Number	Percent
White Alone	193,215	84.7%	184,440	82.0%	181,850	81.9%
Black Alone	17,662	7.7%	18,868	8.4%	18,783	8.5%
American Indian Alone	558	0.2%	577	0.3%	571	0.3%
Asian Alone	5,419	2.4%	6,725	3.0%	6,574	3.0%
Pacific Islander Alone	63	0.0%	86	0.0%	85	0.0%
Some Other Race Alone	5,496	2.4%	7,046	3.1%	6,964	3.1%
Two or More Races	5,631	2.5%	7,177	3.2%	7,091	3.2%
Hispanic Origin (Any Race)	14,698	6.4%	19,052	8.5%	18,803	8.5%

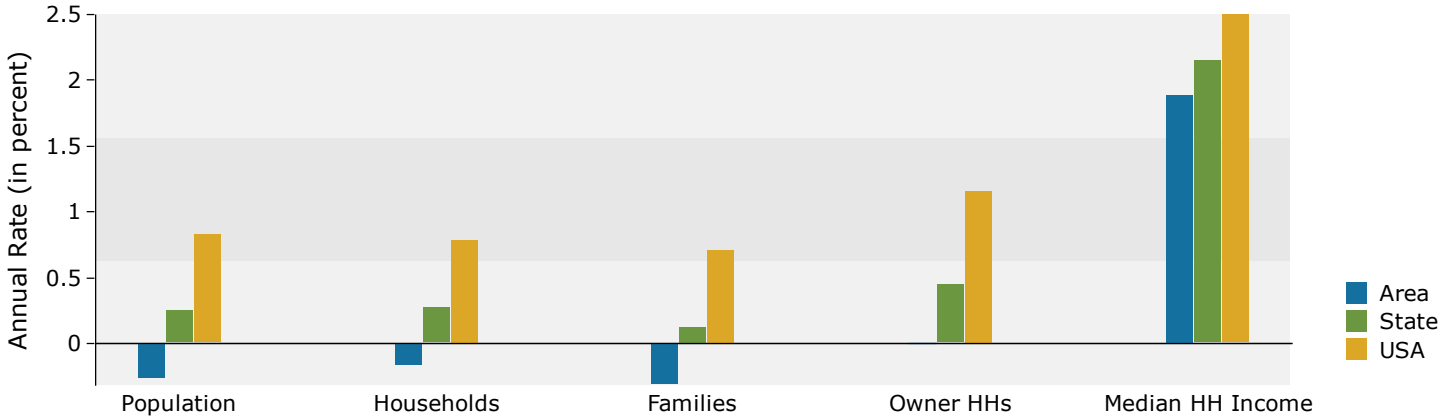
Data Note: Income is expressed in current dollars.

Source: U.S. Census Bureau, Census 2010 Summary File 1. Esri forecasts for 2018 and 2023.

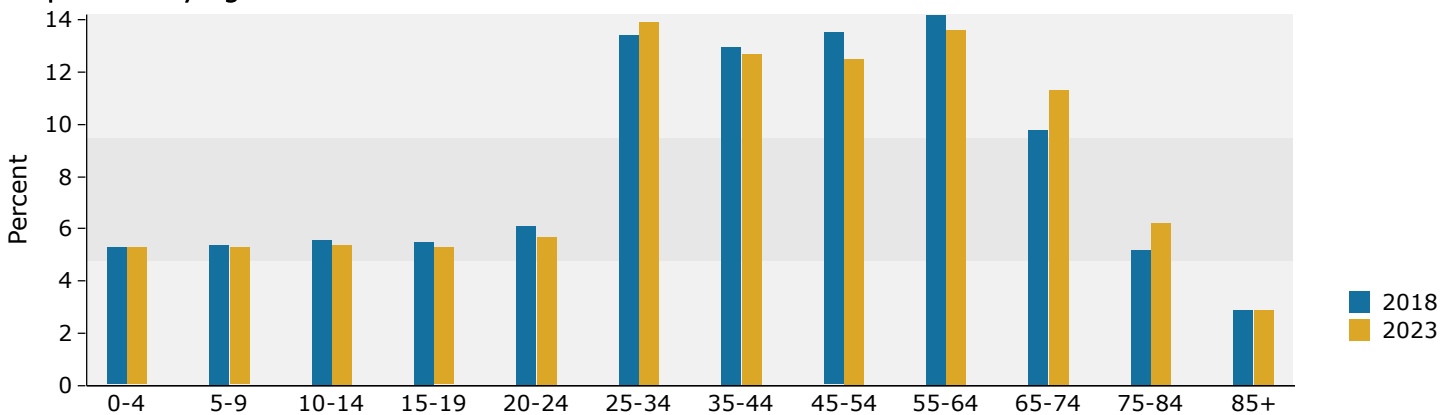
Westgate
 Lat.: 41.459712 Long.: -81.850711
 Ring: 5 mile radius

IRC Demographics
 Latitude: 41.45971
 Longitude: -81.85071

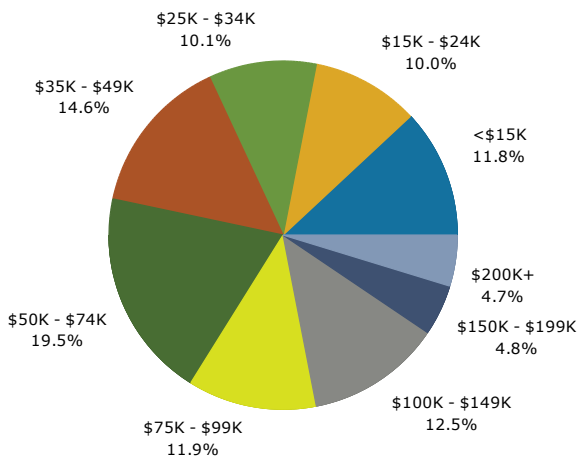
Trends 2018-2023



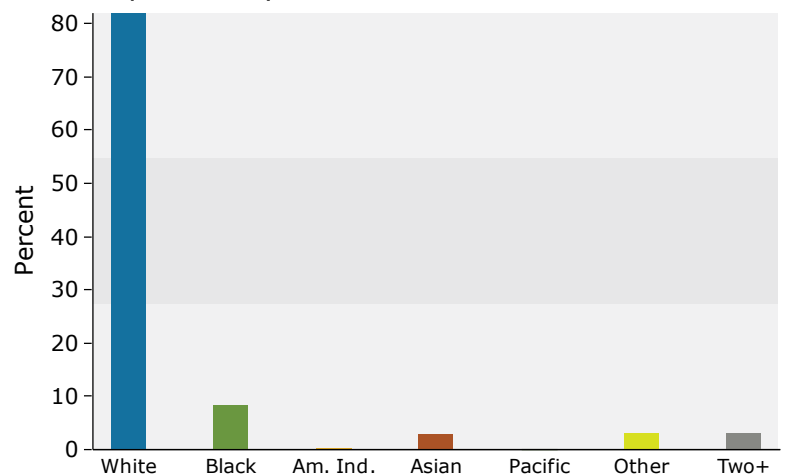
Population by Age



2018 Household Income



2018 Population by Race



2018 Percent Hispanic Origin: 8.5%