

Oak Forest Commons
 Lat.: 41.603852 Long.: -87.754383
 Ring: 1 mile radius

IRC Demographics
 Latitude: 41.60385
 Longitude: -87.75438

Summary	Census 2010	2018	2023
Population	12,489	12,158	11,975
Households	4,679	4,561	4,489
Families	3,200	3,095	3,041
Average Household Size	2.66	2.66	2.66
Owner Occupied Housing Units	3,416	3,246	3,245
Renter Occupied Housing Units	1,263	1,315	1,244
Median Age	36.5	38.4	39.5
Trends: 2018 - 2023 Annual Rate	Area	State	National
Population	-0.30%	0.10%	0.83%
Households	-0.32%	0.12%	0.79%
Families	-0.35%	0.01%	0.71%
Owner HHs	-0.01%	0.37%	1.16%
Median Household Income	1.38%	1.96%	2.50%

Households by Income	2018		2023	
	Number	Percent	Number	Percent
<\$15,000	298	6.5%	269	6.0%
\$15,000 - \$24,999	332	7.3%	288	6.4%
\$25,000 - \$34,999	415	9.1%	373	8.3%
\$35,000 - \$49,999	565	12.4%	527	11.7%
\$50,000 - \$74,999	730	16.0%	681	15.2%
\$75,000 - \$99,999	851	18.7%	834	18.6%
\$100,000 - \$149,999	907	19.9%	969	21.6%
\$150,000 - \$199,999	378	8.3%	440	9.8%
\$200,000+	84	1.8%	107	2.4%
Median Household Income	\$72,201		\$77,307	
Average Household Income	\$80,024		\$88,131	
Per Capita Income	\$30,412		\$33,452	

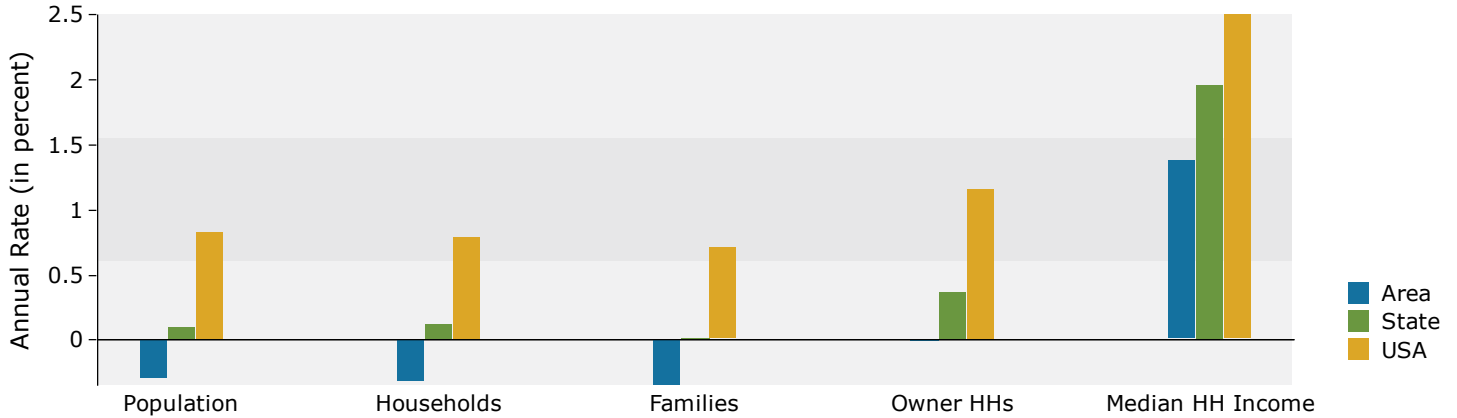
Population by Age	Census 2010		2018		2023	
	Number	Percent	Number	Percent	Number	Percent
0 - 4	804	6.4%	713	5.9%	704	5.9%
5 - 9	760	6.1%	700	5.8%	654	5.5%
10 - 14	878	7.0%	777	6.4%	739	6.2%
15 - 19	889	7.1%	749	6.2%	709	5.9%
20 - 24	854	6.8%	758	6.2%	691	5.8%
25 - 34	1,801	14.4%	1,771	14.6%	1,679	14.0%
35 - 44	1,720	13.8%	1,677	13.8%	1,789	14.9%
45 - 54	2,019	16.2%	1,668	13.7%	1,544	12.9%
55 - 64	1,481	11.9%	1,672	13.8%	1,560	13.0%
65 - 74	737	5.9%	1,059	8.7%	1,183	9.9%
75 - 84	404	3.2%	450	3.7%	564	4.7%
85+	142	1.1%	163	1.3%	160	1.3%

Race and Ethnicity	Census 2010		2018		2023	
	Number	Percent	Number	Percent	Number	Percent
White Alone	10,116	81.0%	9,618	79.1%	9,299	77.7%
Black Alone	733	5.9%	638	5.2%	571	4.8%
American Indian Alone	25	0.2%	23	0.2%	25	0.2%
Asian Alone	575	4.6%	693	5.7%	787	6.6%
Pacific Islander Alone	1	0.0%	1	0.0%	1	0.0%
Some Other Race Alone	761	6.1%	862	7.1%	943	7.9%
Two or More Races	280	2.2%	324	2.7%	349	2.9%
Hispanic Origin (Any Race)	1,678	13.4%	1,914	15.7%	2,119	17.7%

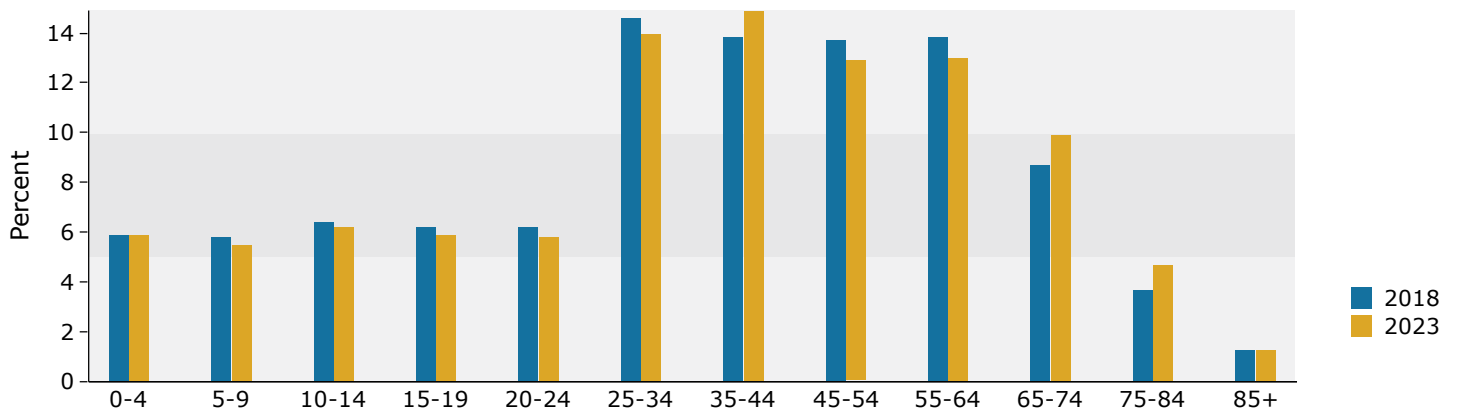
Data Note: Income is expressed in current dollars.

Source: U.S. Census Bureau, Census 2010 Summary File 1. Esri forecasts for 2018 and 2023.

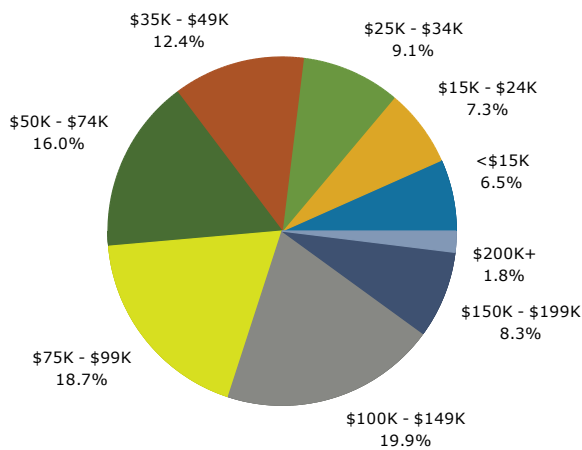
Trends 2018-2023



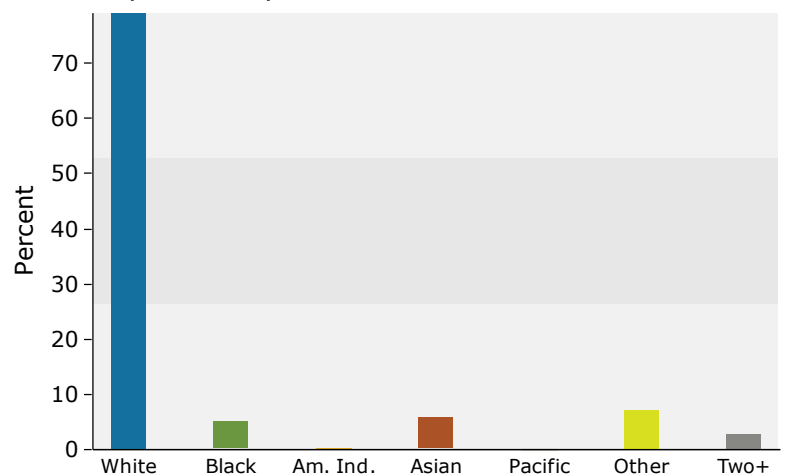
Population by Age



2018 Household Income



2018 Population by Race



2018 Percent Hispanic Origin: 15.7%

Oak Forest Commons
 Lat.: 41.603852 Long.: -87.754383
 Ring: 3 mile radius

IRC Demographics
 Latitude: 41.60385
 Longitude: -87.75438

Summary	Census 2010	2018	2023
Population	82,024	80,510	79,654
Households	31,075	30,660	30,333
Families	21,192	20,747	20,498
Average Household Size	2.63	2.61	2.61
Owner Occupied Housing Units	24,748	23,879	23,975
Renter Occupied Housing Units	6,327	6,781	6,358
Median Age	38.3	39.9	41.1
Trends: 2018 - 2023 Annual Rate	Area	State	National
Population	-0.21%	0.10%	0.83%
Households	-0.21%	0.12%	0.79%
Families	-0.24%	0.01%	0.71%
Owner HHs	0.08%	0.37%	1.16%
Median Household Income	1.70%	1.96%	2.50%

Households by Income	2018		2023	
	Number	Percent	Number	Percent
<\$15,000	2,449	8.0%	2,335	7.7%
\$15,000 - \$24,999	2,512	8.2%	2,247	7.4%
\$25,000 - \$34,999	2,697	8.8%	2,466	8.1%
\$35,000 - \$49,999	3,748	12.2%	3,529	11.6%
\$50,000 - \$74,999	5,469	17.8%	5,077	16.7%
\$75,000 - \$99,999	4,950	16.1%	4,848	16.0%
\$100,000 - \$149,999	5,792	18.9%	6,158	20.3%
\$150,000 - \$199,999	2,068	6.7%	2,417	8.0%
\$200,000+	975	3.2%	1,256	4.1%
Median Household Income	\$65,929		\$71,729	
Average Household Income	\$79,657		\$88,160	
Per Capita Income	\$30,589		\$33,835	

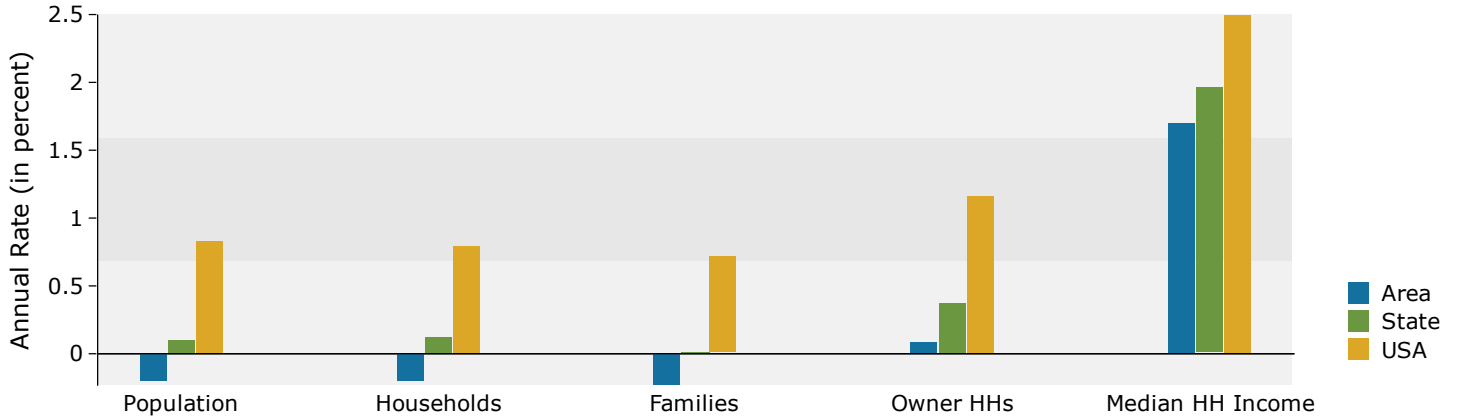
Population by Age	Census 2010		2018		2023	
	Number	Percent	Number	Percent	Number	Percent
0 - 4	4,951	6.0%	4,511	5.6%	4,421	5.6%
5 - 9	5,046	6.2%	4,692	5.8%	4,472	5.6%
10 - 14	5,636	6.9%	4,976	6.2%	4,890	6.1%
15 - 19	5,816	7.1%	4,605	5.7%	4,521	5.7%
20 - 24	4,972	6.1%	4,440	5.5%	3,753	4.7%
25 - 34	11,195	13.6%	11,491	14.3%	10,481	13.2%
35 - 44	10,571	12.9%	10,685	13.3%	11,679	14.7%
45 - 54	12,790	15.6%	10,280	12.8%	9,657	12.1%
55 - 64	10,148	12.4%	11,226	13.9%	10,355	13.0%
65 - 74	5,909	7.2%	7,954	9.9%	8,814	11.1%
75 - 84	3,457	4.2%	3,886	4.8%	4,814	6.0%
85+	1,532	1.9%	1,765	2.2%	1,795	2.3%

Race and Ethnicity	Census 2010		2018		2023	
	Number	Percent	Number	Percent	Number	Percent
White Alone	63,136	77.0%	60,866	75.6%	59,462	74.7%
Black Alone	10,752	13.1%	10,061	12.5%	9,492	11.9%
American Indian Alone	168	0.2%	158	0.2%	165	0.2%
Asian Alone	2,130	2.6%	2,627	3.3%	3,028	3.8%
Pacific Islander Alone	22	0.0%	22	0.0%	22	0.0%
Some Other Race Alone	4,103	5.0%	4,761	5.9%	5,278	6.6%
Two or More Races	1,713	2.1%	2,016	2.5%	2,207	2.8%
Hispanic Origin (Any Race)	9,563	11.7%	11,075	13.8%	12,389	15.6%

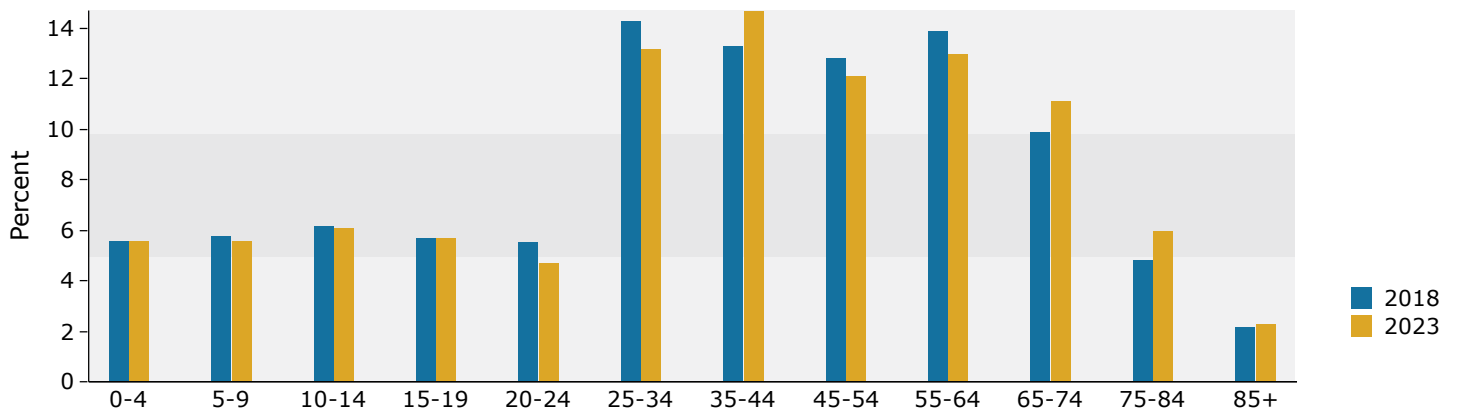
Data Note: Income is expressed in current dollars.

Source: U.S. Census Bureau, Census 2010 Summary File 1. Esri forecasts for 2018 and 2023.

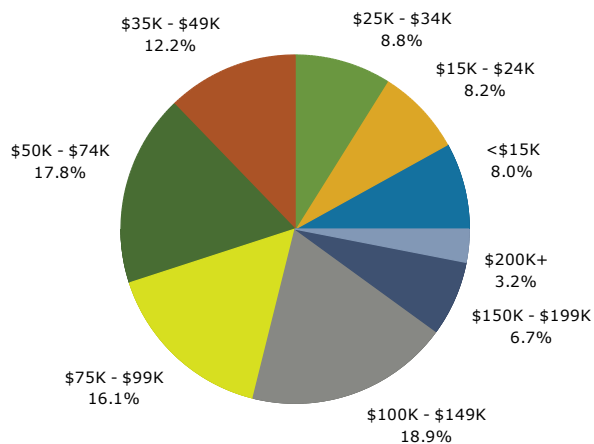
Trends 2018-2023



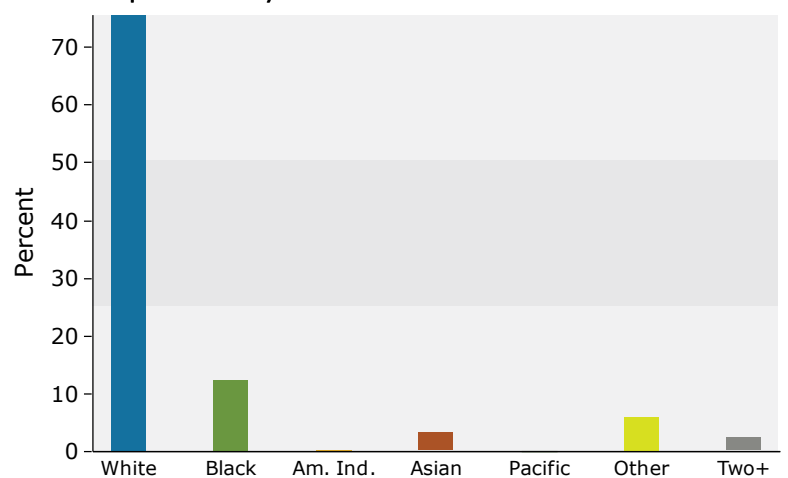
Population by Age



2018 Household Income



2018 Population by Race



2018 Percent Hispanic Origin: 13.8%

Oak Forest Commons
 Lat.: 41.603852 Long.: -87.754383
 Ring: 5 mile radius

IRC Demographics
 Latitude: 41.60385
 Longitude: -87.75438

Summary	Census 2010	2018	2023
Population	227,881	223,890	221,622
Households	84,017	82,883	82,028
Families	58,697	57,494	56,825
Average Household Size	2.68	2.67	2.67
Owner Occupied Housing Units	67,043	64,774	64,931
Renter Occupied Housing Units	16,974	18,108	17,097
Median Age	38.8	40.3	41.4
Trends: 2018 - 2023 Annual Rate	Area	State	National
Population	-0.20%	0.10%	0.83%
Households	-0.21%	0.12%	0.79%
Families	-0.23%	0.01%	0.71%
Owner HHs	0.05%	0.37%	1.16%
Median Household Income	1.50%	1.96%	2.50%

Households by Income	2018		2023	
	Number	Percent	Number	Percent
<\$15,000	7,477	9.0%	7,150	8.7%
\$15,000 - \$24,999	7,634	9.2%	6,905	8.4%
\$25,000 - \$34,999	7,054	8.5%	6,503	7.9%
\$35,000 - \$49,999	9,556	11.5%	9,066	11.1%
\$50,000 - \$74,999	14,636	17.7%	13,696	16.7%
\$75,000 - \$99,999	11,893	14.3%	11,670	14.2%
\$100,000 - \$149,999	14,834	17.9%	15,616	19.0%
\$150,000 - \$199,999	5,542	6.7%	6,281	7.7%
\$200,000+	4,258	5.1%	5,142	6.3%
Median Household Income	\$64,430		\$69,411	
Average Household Income	\$83,321		\$92,037	
Per Capita Income	\$31,250		\$34,475	

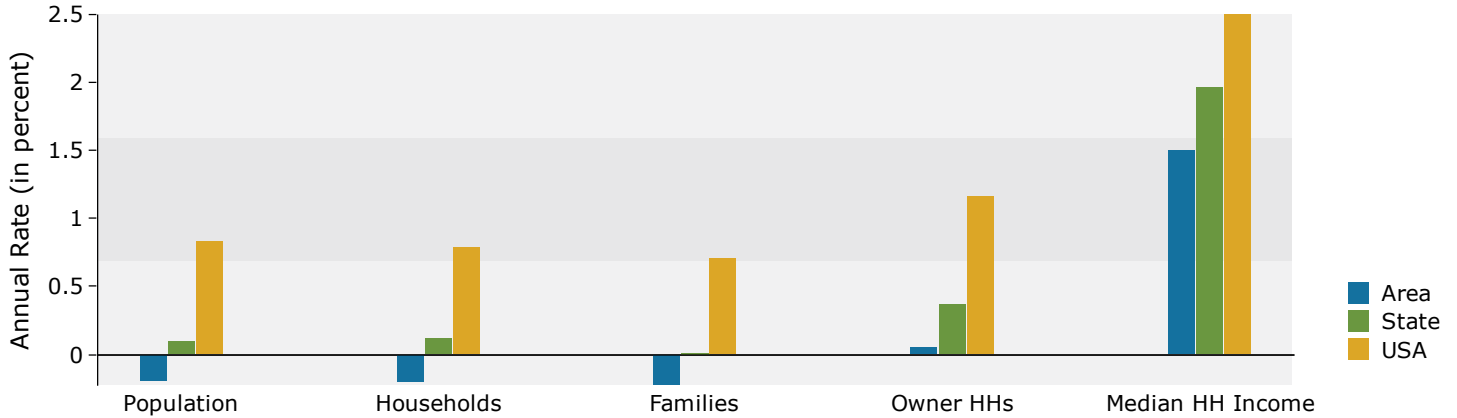
Population by Age	Census 2010		2018		2023	
	Number	Percent	Number	Percent	Number	Percent
0 - 4	13,500	5.9%	12,414	5.5%	12,200	5.5%
5 - 9	14,508	6.4%	13,152	5.9%	12,614	5.7%
10 - 14	16,192	7.1%	14,125	6.3%	13,633	6.2%
15 - 19	17,477	7.7%	13,760	6.1%	13,148	5.9%
20 - 24	13,803	6.1%	12,880	5.8%	10,830	4.9%
25 - 34	28,042	12.3%	30,261	13.5%	28,239	12.7%
35 - 44	28,147	12.4%	27,636	12.3%	30,636	13.8%
45 - 54	35,345	15.5%	28,043	12.5%	26,007	11.7%
55 - 64	29,104	12.8%	31,641	14.1%	28,738	13.0%
65 - 74	16,785	7.4%	23,031	10.3%	25,683	11.6%
75 - 84	10,471	4.6%	11,437	5.1%	14,129	6.4%
85+	4,508	2.0%	5,508	2.5%	5,765	2.6%

Race and Ethnicity	Census 2010		2018		2023	
	Number	Percent	Number	Percent	Number	Percent
White Alone	146,434	64.3%	142,463	63.6%	140,021	63.2%
Black Alone	60,919	26.7%	57,222	25.6%	54,586	24.6%
American Indian Alone	496	0.2%	482	0.2%	502	0.2%
Asian Alone	5,416	2.4%	6,743	3.0%	7,830	3.5%
Pacific Islander Alone	57	0.0%	59	0.0%	56	0.0%
Some Other Race Alone	10,232	4.5%	11,769	5.3%	12,938	5.8%
Two or More Races	4,328	1.9%	5,152	2.3%	5,690	2.6%
Hispanic Origin (Any Race)	25,467	11.2%	29,238	13.1%	32,460	14.6%

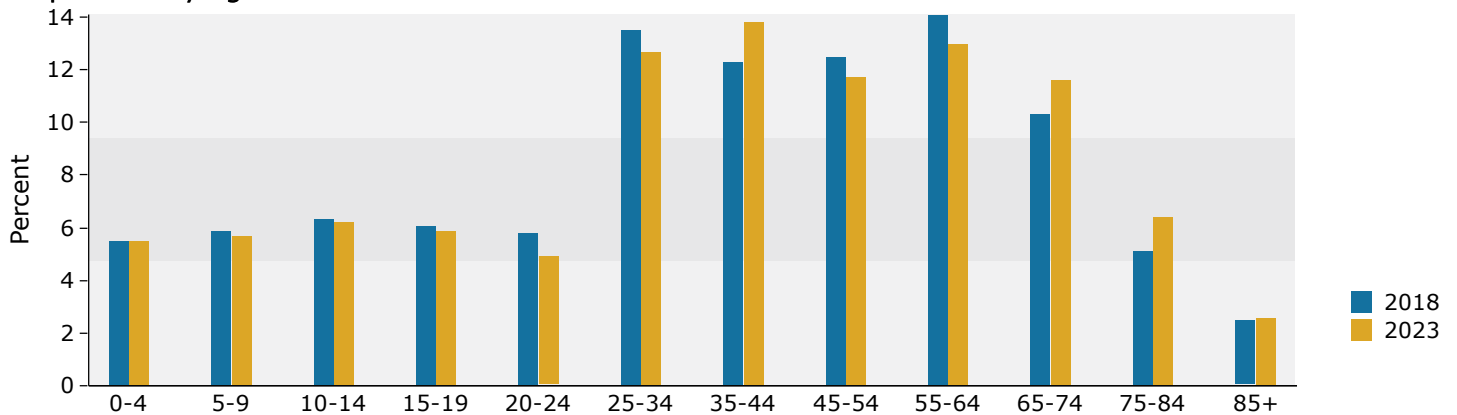
Data Note: Income is expressed in current dollars.

Source: U.S. Census Bureau, Census 2010 Summary File 1. Esri forecasts for 2018 and 2023.

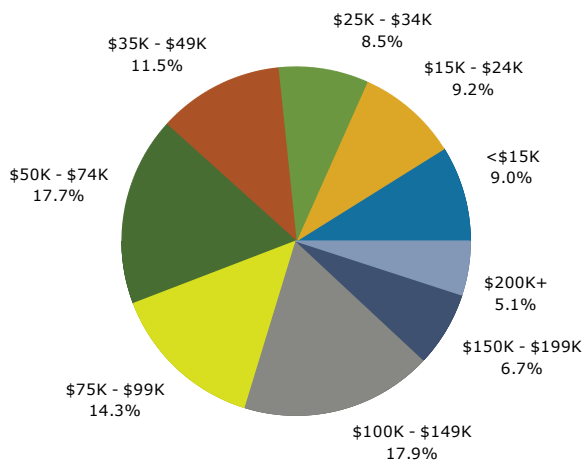
Trends 2018-2023



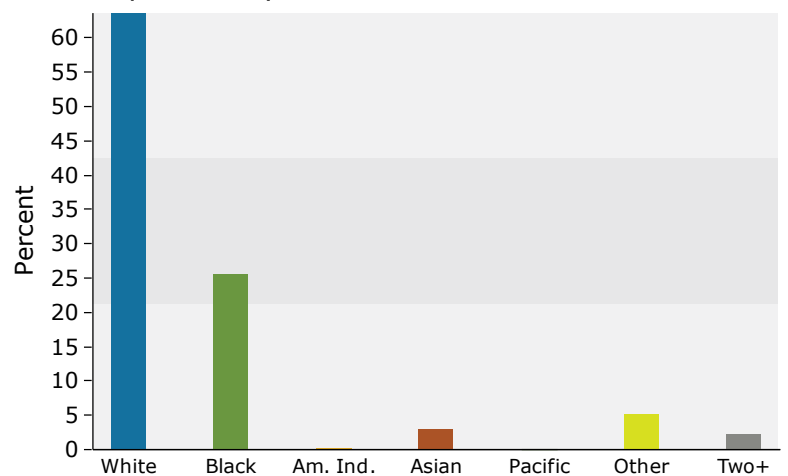
Population by Age



2018 Household Income



2018 Population by Race



2018 Percent Hispanic Origin: 13.1%