

WOODLAND HEIGHTS
 129-131 E. IRVING PARK RD
 STREAMWOOD, IL 60107
 SQUARE FOOTAGE: ±4,000
 UNIT 14

EXISTING CONSTRUCTION

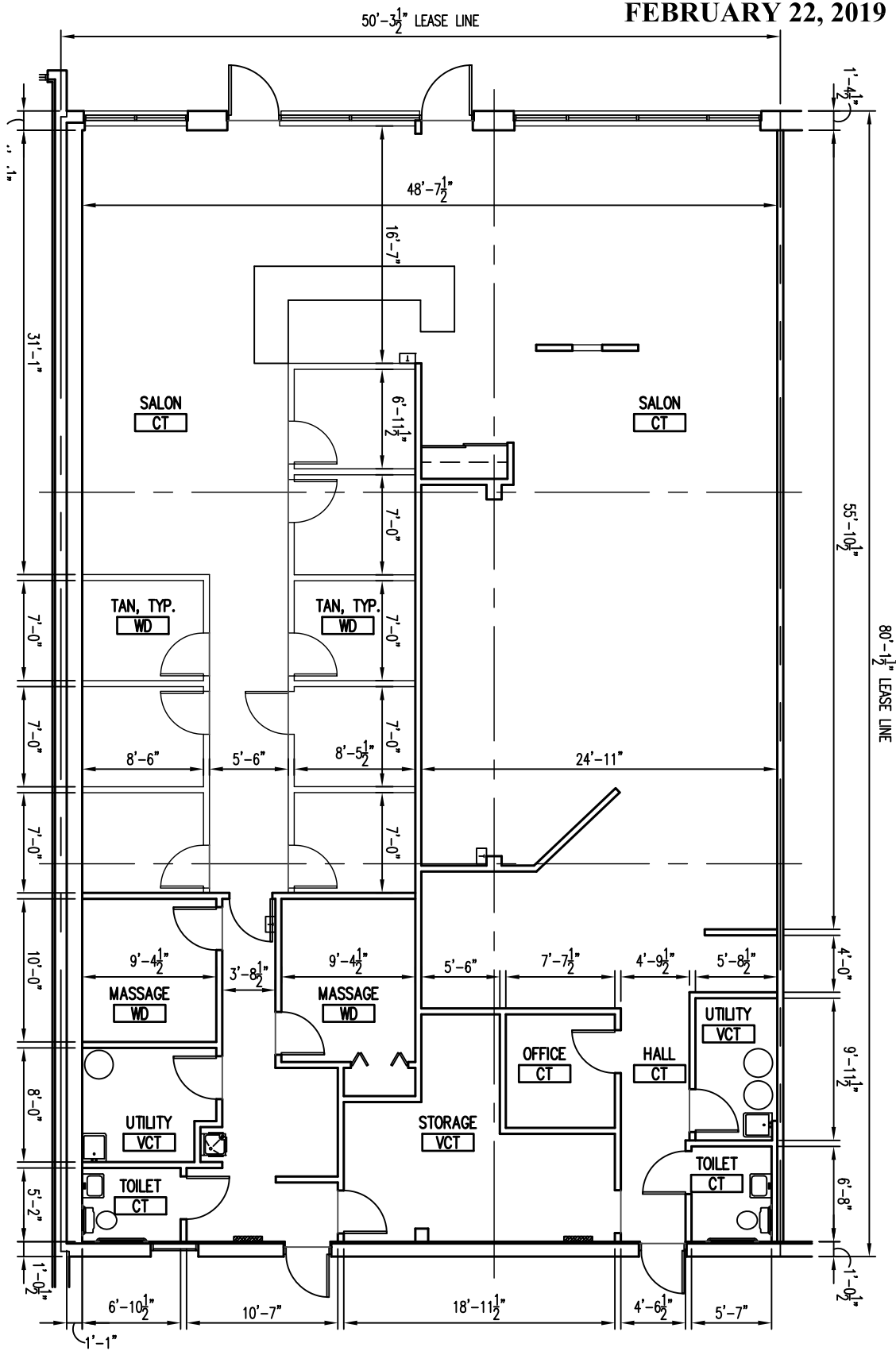
FRONT: ALUM. STOREFRONT ASSEMBLY
 (1/4" GLASS) / GYP. BD ON MTL.
 FRAMING OVER MASONRY WALL
 SIDES: 1 HR. GYP. BD. DEMISING WALL
 REAR: GYP. BD. ON MTL. FRAMING OVER
 MASONRY

SALON/OFFICES/STORAGE:
 OUTLETS & TELE/DATA
 (MISC. LOCATIONS)
 SURFACE MTD. 1x4, RECESSED 2x4
 FLUORESCENT & TRACK LIGHTS
 2x4 CEILING TILE & GRID
 FINISHES:
 PAINT, WD & VINYL BASE

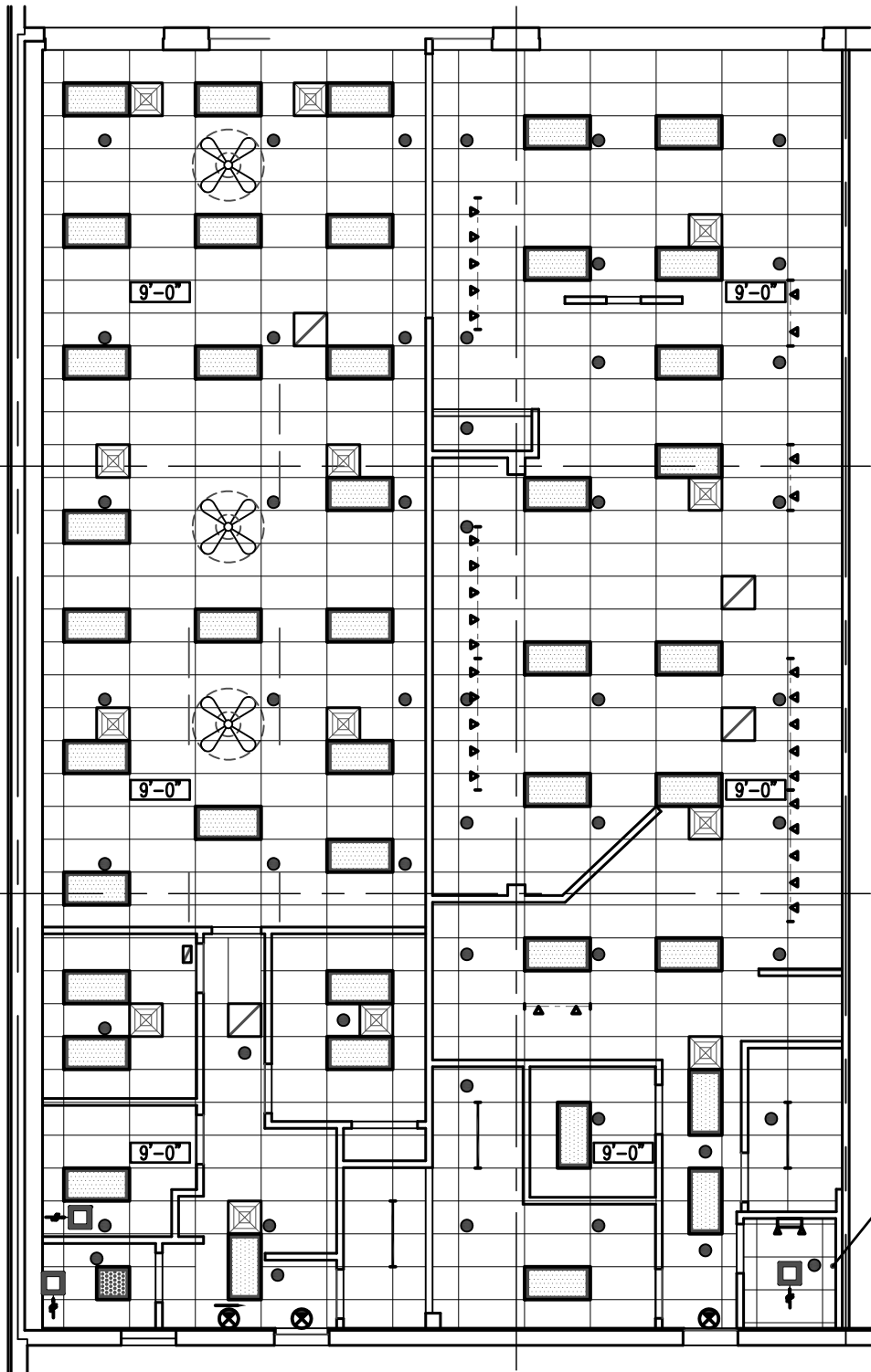
TOILETS (PRE-2010 ADA):
 2x4 CEILING TILE & GRID
 LAVATORY
 WATER CLOSET
 RECESSED 2x2 FLUORESCENT
 COMBO LIGHT/EXHAUST FAN
 EXHAUST FAN
 FINISHES:
 PAINT & VINYL BASE

ELECTRICAL
 (2) 200A 120/208V, 3Ø 4W 42 CKT PANELS

WATER SERVICE: 1"Ø MIN.



FLOOR PLAN
 SCALE: 3/32" = 1'-0"



CEILING PLAN
 SCALE: 3/32" = 1'-0"

LEGEND

	FLUORESCENT LIGHT FIXTURE		SPRINKLER HEAD
	BATTERY PACK EMERGENCY FIXTURE		THERMOSTAT
	EXIT SIGN		POWER PANEL
	TOILET EXHAUST FAN		DIFFUSER / REGISTER
	DOWNLIGHT FIXTURE		F.A. DEVICES

