



**WOODLAND HEIGHTS**  
 223 E. IRVING PARK RD  
 STREAMWOOD, IL 60107  
 SQUARE FOOTAGE: 1,200  
 UNIT 9

**EXISTING CONSTRUCTION**

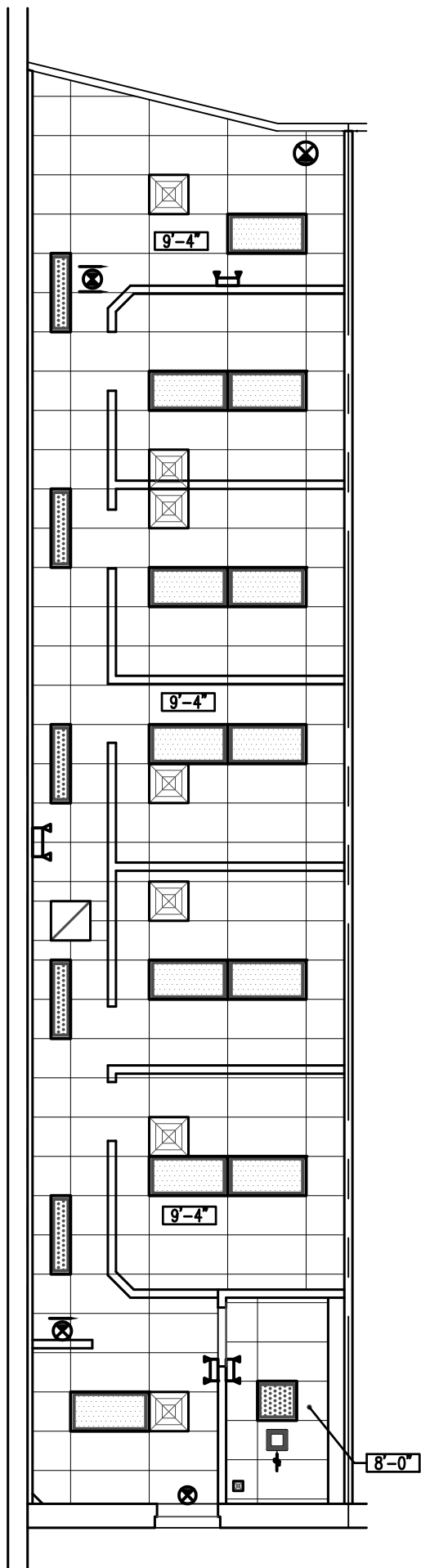
FRONT: ALUM. STOREFRONT ASSEMBLY  
 (1/4" GLASS) / CERAMIC TILE KNEE WALL  
 SIDES: 1 HR. GYP. BD. DEMISING WALL  
 REAR: GYP. BD. ON MTL. FRAMING OVER MASONRY

RECEPTION/OFFICES:  
 OUTLETS & TELE/DATA (MISC. LOCATIONS)  
 RECESSED 1x4 & 2x4 FLUORESCENT  
 2x4 CEILING TILE & GRID  
 FINISHES:  
 PAINT, WD CHAIR RAIL  
 VINYL BASE

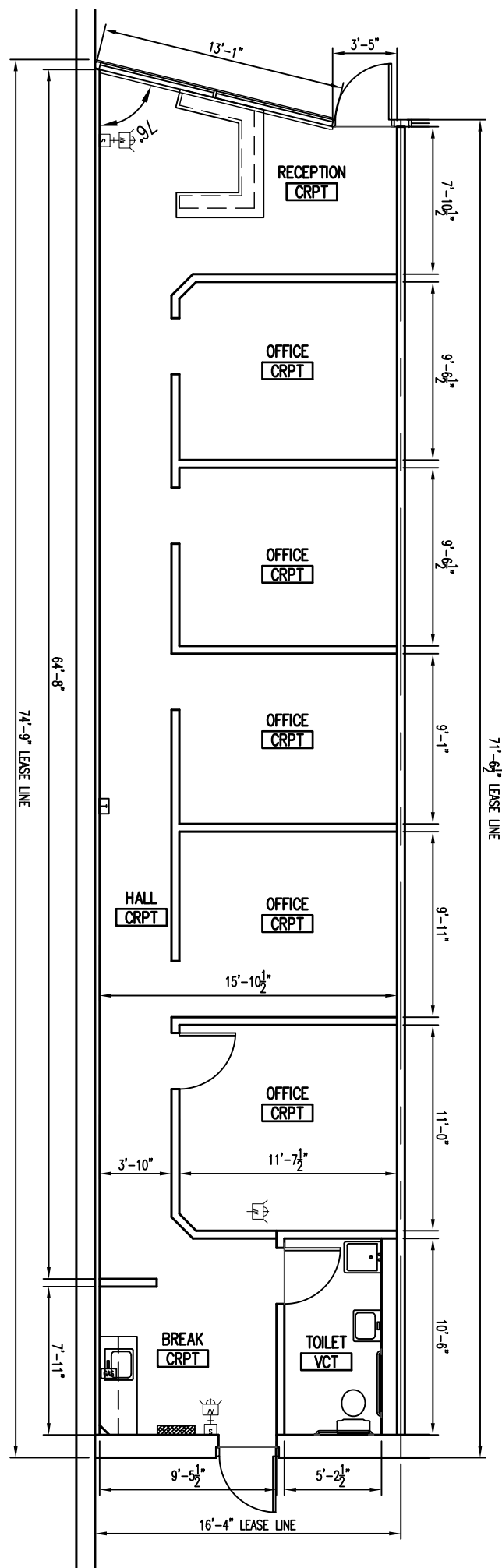
TOILET (2010-ADA):  
 2x4 CEILING TILE & GRID  
 LAVATORY  
 WATER CLOSET  
 RECESSED 2x2 FLUORESCENT  
 EXHAUST FAN  
 FINISHES:  
 VINYL BASE

ELECTRICAL  
 100A 120/208V, 3Ø 4W 30 CKT PANEL

WATER SERVICE: 3/4"Ø



**CEILING PLAN**  
 SCALE: 1/8" = 1'-0"



**FLOOR PLAN**  
 SCALE: 1/8" = 1'-0"

LEGEND			
	FLUORESCENT LIGHT FIXTURE		SPRINKLER HEAD
	BATTERY PACK EMERGENCY FIXTURE		THERMOSTAT
	EXIT SIGN		POWER PANEL
	TOILET EXHAUST FAN		DIFFUSER / REGISTER
	DOWNLIGHT FIXTURE		F.A. DEVICES

