



**WOODLAND HEIGHTS**  
 227 E. IRVING PARK RD  
 STREAMWOOD, IL 60107  
 SQUARE FOOTAGE: 1,010  
 UNIT 7

**EXISTING CONSTRUCTION**

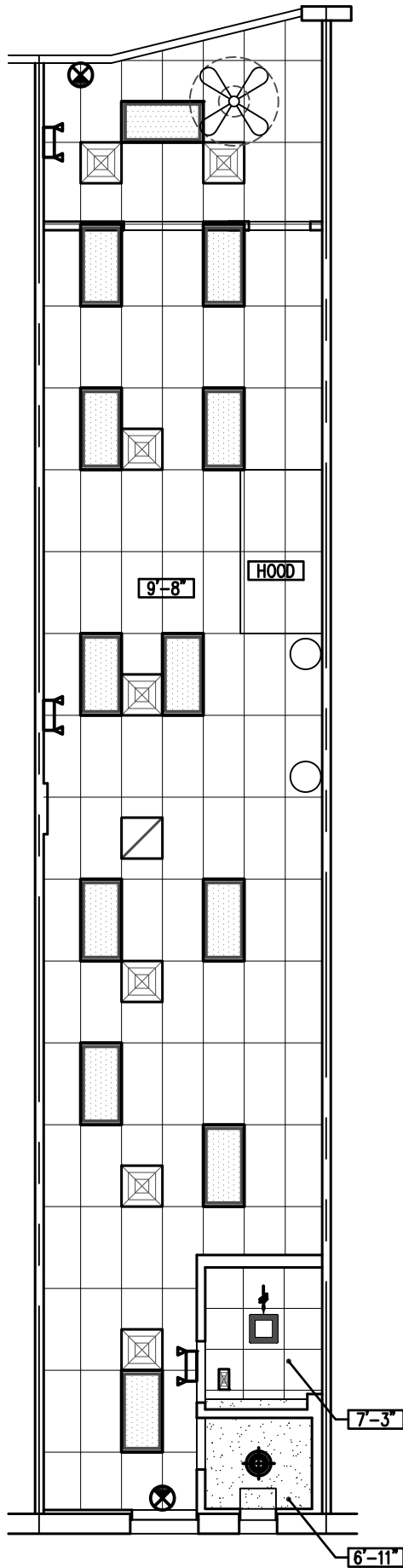
FRONT: ALUM. STOREFRONT ASSEMBLY  
 (1/4" GLASS) / CERAMIC TILE KNEE WALL  
 SIDES: 1 HR. GYP. BD. DEMISING WALL  
 REAR: GYP. BD. ON MTL. FRAMING OVER MASONRY

PICK-UP/KITCHEN:  
 OUTLETS & TELE/DATA (MISC. LOCATIONS)  
 RECESSED 2x4 FLUORESCENT 2x4 CEILING TILE & GRID  
 FINISHES:  
 PAINT, CERAMIC TILE WAINSCOT, WD CHAIR RAIL, FRP & STAINLESS STL.  
 VINYL BASE

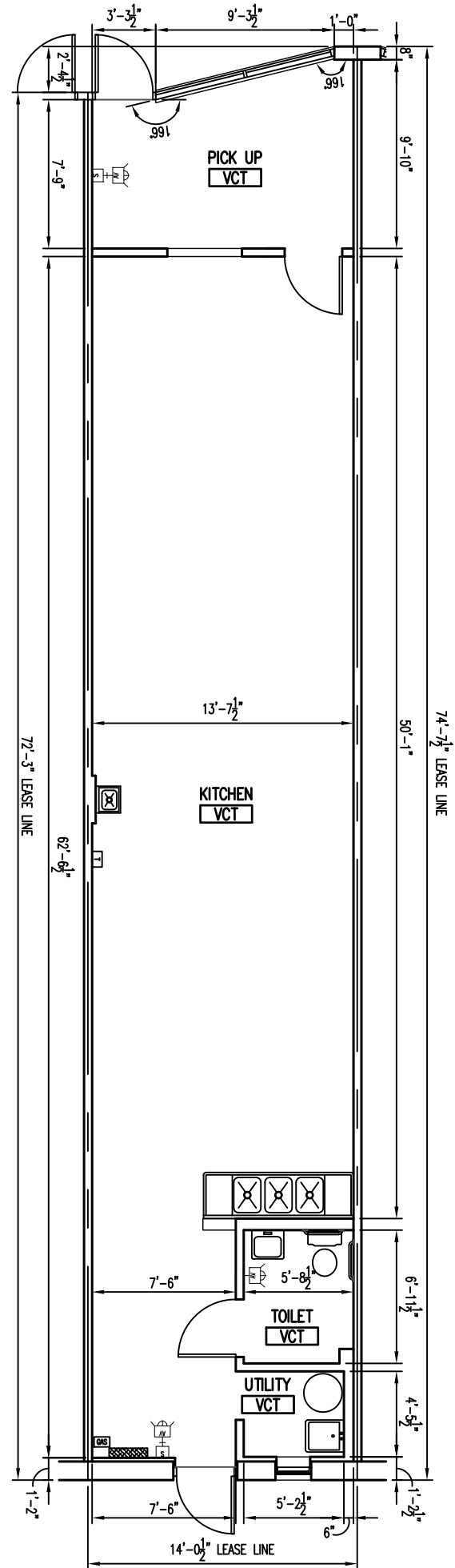
TOILET (NON-ADA):  
 2x2 CEILING TILE & GRID  
 LAVATORY  
 WATER CLOSET  
 COMBO LIGHT / EXHAUST FAN  
 FINISHES:  
 FRP & VINYL BASE

ELECTRICAL  
 150A 120/208V, 3Ø 4W 30 CKT PANEL

WATER SERVICE: 3/4"Ø

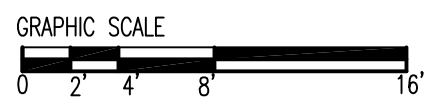


**CEILING PLAN**  
 SCALE: 1/8" = 1'-0"



**FLOOR PLAN**  
 SCALE: 1/8" = 1'-0"

LEGEND			
	FLUORESCENT LIGHT FIXTURE		SPRINKLER HEAD
	BATTERY PACK EMERGENCY FIXTURE		THERMOSTAT
	EXIT SIGN		POWER PANEL
	TOILET EXHAUST FAN		DIFFUSER / REGISTER
	DOWNLIGHT FIXTURE		F.A. DEVICES



LEASE LINE PER BOMA Z65.5-2010