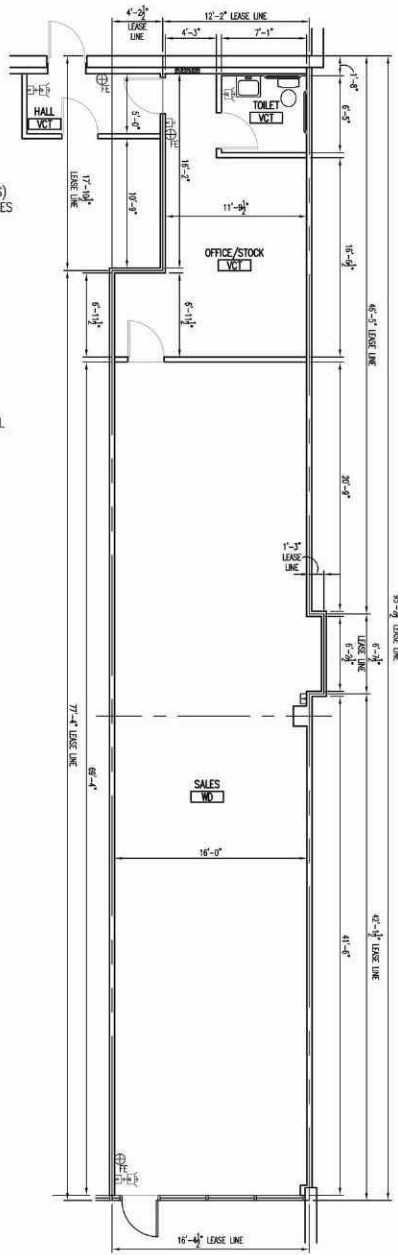


OCTOBER 09, 2015

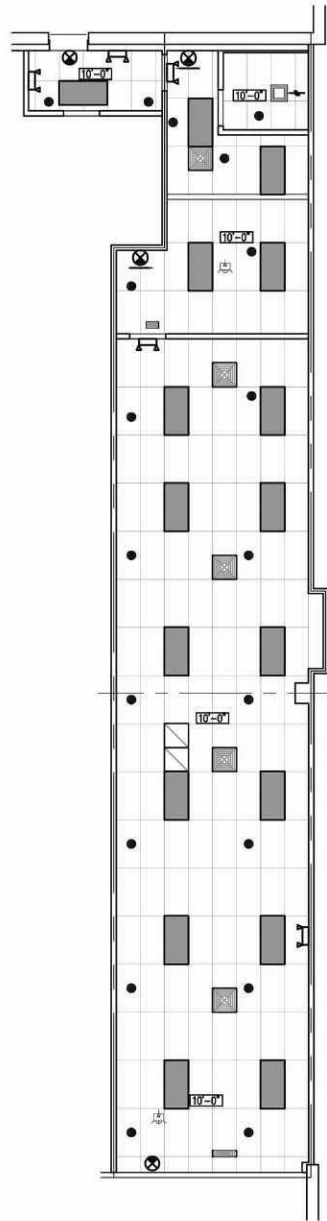
RAVINIA PLAZA
 15190 LaGRANGE RD
 ORLAND PARK, IL 60462
 SQUARE FOOTAGE: 1,490
 UNIT 22

EXISTING CONSTRUCTION

- FRONT: ALUM. STOREFRONT ASSEMBLY (1" INSUL. GLASS)
 SIDES: 1 HR. GYP. BD. DEMISING WALL/GYP. BD. ON MTL. FRAMING OVER MASONRY
 REAR: GYP. BD. ON MTL. FRAMING OVER MASONRY
- SALES/OFFICE/STOCK:
 OUTLETS & TELE/DATA (MISC. LOCATIONS)
 2x4 RECESSED FLUORESCENT FIXTURES
 2x4 CEILING TILE & GRID
 FINISHES:
 PAINT & VINYL BASE
- TOILET (PRE-2010 ADA):
 2x4 CEILING TILE & GRID
 LAVATORY
 WATER CLOSET
 COMBO LIGHT / EXHAUST FAN
 FINISHES:
 PAINT & VINYL BASE
- ELECTRICAL:
 200A 120/208V, 3Ø 4W 42 BRKR PANEL
- WATER SERVICE 3/4"



FLOOR PLAN
 SCALE: 1/8" = 1'-0"



CEILING PLAN
 SCALE: 1/8" = 1'-0"

LEGEND

	FLUORESCENT LIGHT FIXTURE		SPRINKLER HEAD
	BATTERY PACK		THERMOSTAT
	EMERGENCY FIXTURE		POWER PANEL
	EXIT SIGN		SIFTED / RECESSED
	TOILET EXHAUST FAN		F.A. BOXES
	FIRE EXTINGUISHER		



LEASE LINE PER BOMA Z85.5-2010

LEASING INQUIRIES
PHONE: 877.206.5656
 EMAIL: LEASING@IRCRETAILCENTERS.COM
IRCRETAILCENTERS.COM