



RetailCenters

MAPLE PARK PLACE

267 N. WEBER RD
 BOLINGBROOK, IL 60490
 SQUARE FOOTAGE: 1,610
 UNIT 16

EXISTING CONSTRUCTION

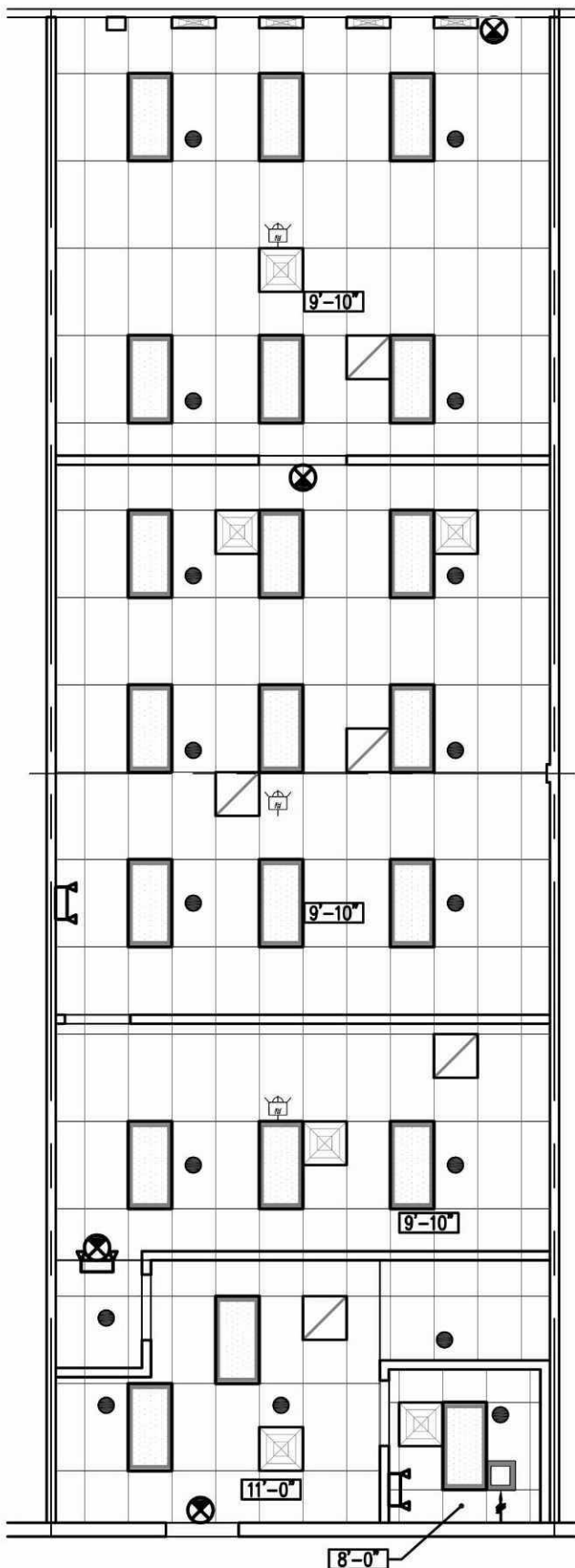
FRONT: ALUM. STOREFRONT ASSEMBLY (1/4" GLASS)
 SIDES: 1 HR. GYP. BD.
 REAR: DEMISING WALL
 PAINTED CMU

SALES/BREAK/OFFICE:
 OUTLETS & TELE/DATA (MISC. LOCATIONS)
 2x4 RECESSED FLUORESCENT FIXTURES
 2x4 CEILING TILE & GRID
 FINISHES: PAINT, VINYL BASE

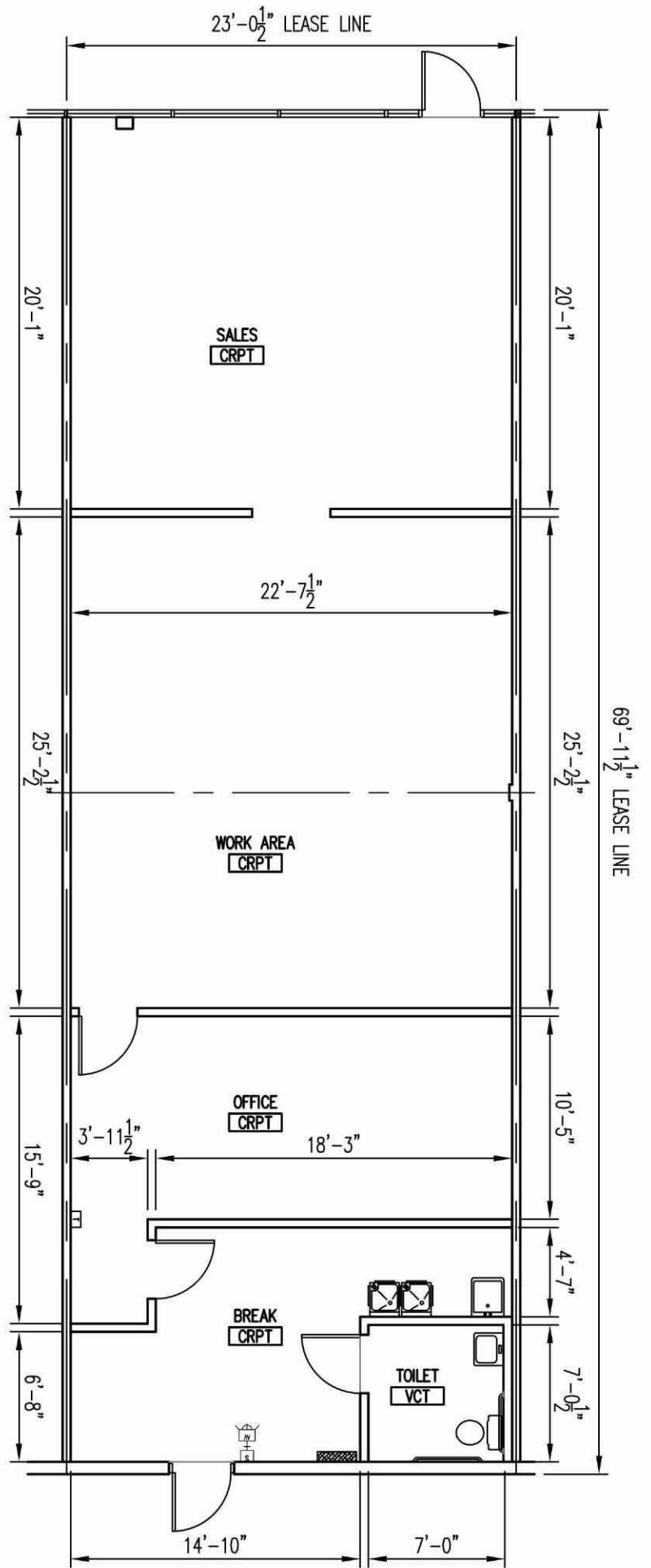
TOILETS (2010 ADA):
 2x4 RECESSED FLUORESCENT FIXTURE
 2x4 CEILING TILE & GRID
 LAVATORY WATER CLOSET
 EXHAUST FAN
 FINISHES: PAINT & VINYL BASE

ELECTRICAL
 100A 120/208V, 3Ø
 4W 30 BRKR PANEL

WATER SERVICE 3/4"Ø



CEILING PLAN
 SCALE: 1/8" = 1'-0"



FLOOR PLAN
 SCALE: 1/8" = 1'-0"

| LEGEND | | | |
|--------|--------------------------------|--|---------------------|
| | FLUORESCENT LIGHT FIXTURE | | SPRINKLER HEAD |
| | BATTERY PACK EMERGENCY FIXTURE | | THERMOSTAT |
| | EXIT SIGN | | POWER PANEL |
| | TOILET EXHAUST FAN | | DIFFUSER / REGISTER |
| | DOWNLIGHT FIXTURE | | F.A. DEVICES |

