

NOVEMBER 1, 2011

WOODLAND HEIGHTS
 139B IRVING PARK RD
 STREAMWOOD, IL 60107
 SQUARE FOOTAGE: 2,010

EXISTING CONSTRUCTION

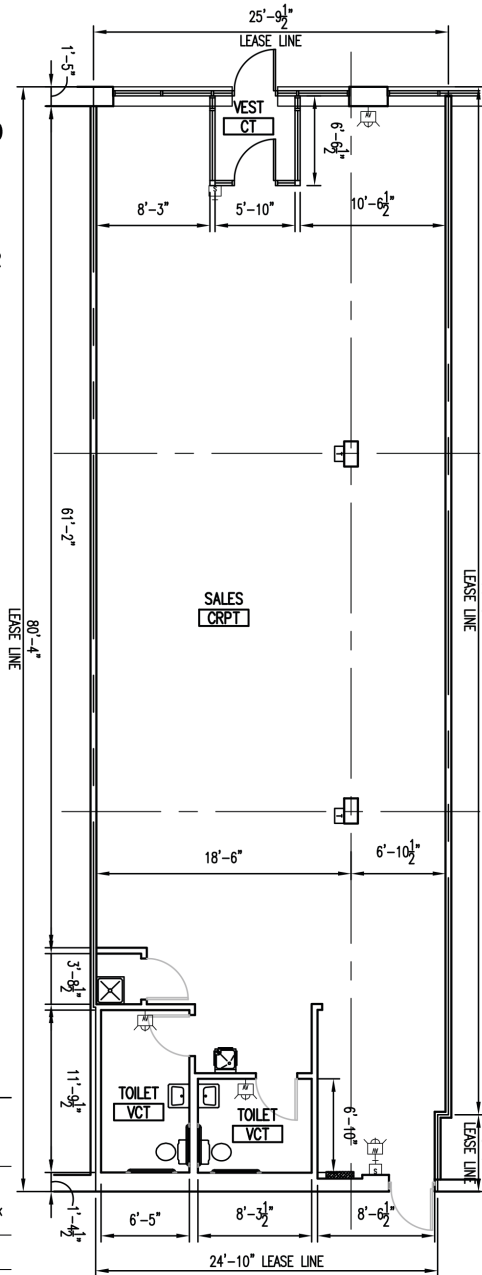
FRONT: ALUM. STOREFRONT
 ASSEMBLY/GYP. BD. OVER
 FURRING OVER MASONRY
 SIDES: 1 HR. GYP. BD.
 DEMISING WALL
 REAR: GYP. BD. FURRING
 OVER MTL. FURRING
 OVER MASONRY

SALES:
 OUTLETS & TELE/DATA
 (MISC. LOCATIONS)
 2x4 RECESSED
 FLUORESCENT FIXTURES
 2x4 CEILING TILE & GRID
 FINISHES:
 PAINT, VINYL BASE

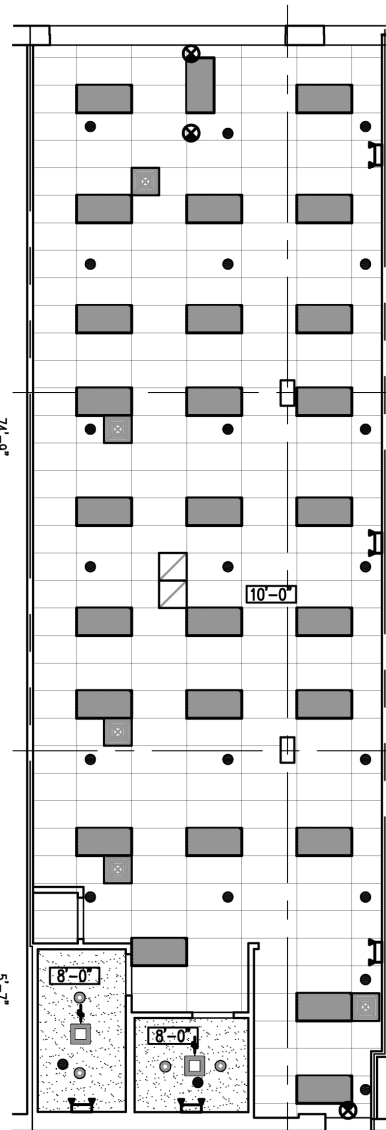
TOILETS (ADA):
 GYP. BD. CEILING
 LAVATORY
 WATER CLOSET
 COMBO LIGHT/EXHAUST FAN
 FINISHES:
 PAINT & VINYL BASE

ELECTRICAL
 200A 120/208V, 3Ø
 4W 42 BRKR PANEL

WATER SERVICE 1"Ø



FLOOR PLAN
 SCALE: 3/32" = 1'-0"



CEILING PLAN
 SCALE: 3/32" = 1'-0"

LEGEND

	FLUORESCENT LIGHT FIXTURE		TRACK LIGHTS
	FLUORESCENT STRIP FIXTURE		DOWNLIGHT FIXTURE
	BATTERY PACK EMERGENCY FIXTURE		DATA JACK
	EXIT SIGN		TELEPHONE JACK
	TOILET EXHAUST FAN		TELE/DATA JACK
	OUTLETS		F.A. DEVICES
	FIRE EXTINGUISHER		SPRINKLER HEAD
	DIFFUSER / REGISTER		THERMOSTAT
			POWER PANEL



LEASE LINE PER BOMA Z65.5-2010

LEASING INQUIRIES
PHONE: 877.206.5656
 EMAIL: LEASING@IRCRETAILCENTERS.COM
 IRCRETAILCENTERS.COM