



Demographic and Income Comparison Profile

Newport Pavilion
 Location
 Rings: 1, 3, 5 mile radii

Prepared by Esri
 Latitude: 39.08932
 Longitude: -84.47746

	1 mile	3 miles	5 miles
Census 2010 Summary			
Population	15,134	104,029	253,132
Households	6,682	46,466	111,074
Families	3,417	21,826	51,665
Average Household Size	2.16	2.11	2.13
Owner Occupied Housing Units	3,652	20,250	48,990
Renter Occupied Housing Units	3,030	26,216	62,084
Median Age	36.8	35.1	32.8
2016 Summary			
Population	15,461	108,281	261,641
Households	6,792	48,222	114,635
Families	3,398	22,051	51,917
Average Household Size	2.16	2.11	2.13
Owner Occupied Housing Units	3,407	19,040	45,923
Renter Occupied Housing Units	3,385	29,181	68,712
Median Age	37.9	36.2	33.7
Median Household Income	\$40,510	\$37,803	\$38,615
Average Household Income	\$55,238	\$57,959	\$62,160
2021 Summary			
Population	15,708	111,067	267,469
Households	6,897	49,517	117,425
Families	3,411	22,330	52,454
Average Household Size	2.16	2.11	2.13
Owner Occupied Housing Units	3,438	19,395	46,638
Renter Occupied Housing Units	3,459	30,122	70,787
Median Age	38.4	37.0	34.4
Median Household Income	\$42,749	\$39,258	\$40,621
Average Household Income	\$60,300	\$63,257	\$68,020
Trends: 2016-2021 Annual Rate			
Population	0.32%	0.51%	0.44%
Households	0.31%	0.53%	0.48%
Families	0.08%	0.25%	0.21%
Owner Households	0.18%	0.37%	0.31%
Median Household Income	1.08%	0.76%	1.02%

Source: U.S. Census Bureau, Census 2010 Summary File 1. Esri forecasts for 2016 and 2021.



Demographic and Income Comparison Profile

Newport Pavilion
 Location
 Rings: 1, 3, 5 mile radii

Prepared by Esri
 Latitude: 39.08932
 Longitude: -84.47746

2016 Households by Income	1 mile		3 miles		5 miles	
	Number	Percent	Number	Percent	Number	Percent
<\$15,000	1,289	19.0%	11,355	23.5%	26,327	23.0%
\$15,000 - \$24,999	796	11.7%	5,994	12.4%	14,509	12.7%
\$25,000 - \$34,999	818	12.0%	5,267	10.9%	12,102	10.6%
\$35,000 - \$49,999	1,094	16.1%	6,222	12.9%	14,454	12.6%
\$50,000 - \$74,999	1,253	18.4%	7,457	15.5%	16,774	14.6%
\$75,000 - \$99,999	654	9.6%	4,399	9.1%	10,285	9.0%
\$100,000 - \$149,999	544	8.0%	4,168	8.6%	10,711	9.3%
\$150,000 - \$199,999	213	3.1%	1,806	3.7%	4,486	3.9%
\$200,000+	130	1.9%	1,553	3.2%	4,980	4.3%
Median Household Income	\$40,510		\$37,803		\$38,615	
Average Household Income	\$55,238		\$57,959		\$62,160	
Per Capita Income	\$24,526		\$26,742		\$28,081	

2021 Households by Income	1 mile		3 miles		5 miles	
	Number	Percent	Number	Percent	Number	Percent
<\$15,000	1,312	19.0%	11,436	23.1%	26,581	22.6%
\$15,000 - \$24,999	770	11.2%	5,770	11.7%	13,985	11.9%
\$25,000 - \$34,999	909	13.2%	6,006	12.1%	13,772	11.7%
\$35,000 - \$49,999	779	11.3%	4,515	9.1%	9,967	8.5%
\$50,000 - \$74,999	1,297	18.8%	7,923	16.0%	17,739	15.1%
\$75,000 - \$99,999	744	10.8%	4,931	10.0%	11,331	9.7%
\$100,000 - \$149,999	660	9.6%	4,899	9.9%	12,759	10.9%
\$150,000 - \$199,999	280	4.1%	2,267	4.6%	5,657	4.8%
\$200,000+	147	2.1%	1,771	3.6%	5,628	4.8%
Median Household Income	\$42,749		\$39,258		\$40,621	
Average Household Income	\$60,300		\$63,257		\$68,020	
Per Capita Income	\$26,655		\$29,090		\$30,687	

Data Note: Income is expressed in current dollars.

Source: U.S. Census Bureau, Census 2010 Summary File 1. Esri forecasts for 2016 and 2021.



Demographic and Income Comparison Profile

Newport Pavilion
 Location
 Rings: 1, 3, 5 mile radii

Prepared by Esri
 Latitude: 39.08932
 Longitude: -84.47746

2010 Population by Age	1 mile		3 miles		5 miles	
	Number	Percent	Number	Percent	Number	Percent
Age 0 - 4	1,053	7.0%	6,973	6.7%	15,969	6.3%
Age 5 - 9	775	5.1%	5,964	5.7%	13,754	5.4%
Age 10 - 14	708	4.7%	5,310	5.1%	12,553	5.0%
Age 15 - 19	826	5.5%	5,940	5.7%	19,640	7.8%
Age 20 - 24	1,193	7.9%	8,758	8.4%	29,265	11.6%
Age 25 - 34	2,655	17.5%	18,957	18.2%	43,494	17.2%
Age 35 - 44	1,985	13.1%	13,539	13.0%	29,878	11.8%
Age 45 - 54	2,203	14.6%	15,401	14.8%	33,916	13.4%
Age 55 - 64	1,682	11.1%	11,816	11.4%	27,194	10.7%
Age 65 - 74	986	6.5%	6,046	5.8%	14,045	5.5%
Age 75 - 84	701	4.6%	3,712	3.6%	9,316	3.7%
Age 85+	368	2.4%	1,613	1.6%	4,108	1.6%

2016 Population by Age	1 mile		3 miles		5 miles	
	Number	Percent	Number	Percent	Number	Percent
Age 0 - 4	984	6.4%	6,736	6.2%	15,378	5.9%
Age 5 - 9	878	5.7%	6,245	5.8%	14,241	5.4%
Age 10 - 14	723	4.7%	5,577	5.2%	13,021	5.0%
Age 15 - 19	753	4.9%	5,688	5.3%	19,401	7.4%
Age 20 - 24	1,184	7.7%	8,399	7.8%	28,999	11.1%
Age 25 - 34	2,572	16.6%	19,684	18.2%	45,078	17.2%
Age 35 - 44	2,066	13.4%	14,125	13.0%	30,802	11.8%
Age 45 - 54	2,009	13.0%	14,350	13.3%	31,172	11.9%
Age 55 - 64	1,889	12.2%	13,654	12.6%	30,882	11.8%
Age 65 - 74	1,275	8.2%	8,025	7.4%	18,568	7.1%
Age 75 - 84	701	4.5%	3,924	3.6%	9,497	3.6%
Age 85+	426	2.8%	1,874	1.7%	4,601	1.8%

2021 Population by Age	1 mile		3 miles		5 miles	
	Number	Percent	Number	Percent	Number	Percent
Age 0 - 4	978	6.2%	6,806	6.1%	15,604	5.8%
Age 5 - 9	874	5.6%	6,227	5.6%	14,130	5.3%
Age 10 - 14	799	5.1%	5,781	5.2%	13,350	5.0%
Age 15 - 19	749	4.8%	5,770	5.2%	19,412	7.3%
Age 20 - 24	1,062	6.8%	8,029	7.2%	28,052	10.5%
Age 25 - 34	2,648	16.9%	19,711	17.7%	45,559	17.0%
Age 35 - 44	2,137	13.6%	15,289	13.8%	33,352	12.5%
Age 45 - 54	1,869	11.9%	13,429	12.1%	29,088	10.9%
Age 55 - 64	1,880	12.0%	13,806	12.4%	30,857	11.5%
Age 65 - 74	1,475	9.4%	9,798	8.8%	22,536	8.4%
Age 75 - 84	801	5.1%	4,476	4.0%	10,821	4.0%
Age 85+	436	2.8%	1,944	1.8%	4,708	1.8%

Source: U.S. Census Bureau, Census 2010 Summary File 1. Esri forecasts for 2016 and 2021.



Demographic and Income Comparison Profile

Newport Pavilion
 Location
 Rings: 1, 3, 5 mile radii

Prepared by Esri
 Latitude: 39.08932
 Longitude: -84.47746

2010 Race and Ethnicity	1 mile		3 miles		5 miles	
	Number	Percent	Number	Percent	Number	Percent
White Alone	13,838	91.4%	76,406	73.4%	179,883	71.1%
Black Alone	610	4.0%	22,473	21.6%	59,241	23.4%
American Indian Alone	43	0.3%	224	0.2%	606	0.2%
Asian Alone	107	0.7%	1,024	1.0%	4,801	1.9%
Pacific Islander Alone	1	0.0%	66	0.1%	126	0.0%
Some Other Race Alone	197	1.3%	1,296	1.2%	2,755	1.1%
Two or More Races	339	2.2%	2,540	2.4%	5,720	2.3%
Hispanic Origin (Any Race)	512	3.4%	3,004	2.9%	6,650	2.6%

2016 Race and Ethnicity	1 mile		3 miles		5 miles	
	Number	Percent	Number	Percent	Number	Percent
White Alone	13,789	89.2%	77,589	71.7%	181,974	69.6%
Black Alone	801	5.2%	24,281	22.4%	62,334	23.8%
American Indian Alone	55	0.4%	237	0.2%	615	0.2%
Asian Alone	130	0.8%	1,353	1.2%	6,149	2.4%
Pacific Islander Alone	1	0.0%	86	0.1%	160	0.1%
Some Other Race Alone	227	1.5%	1,530	1.4%	3,296	1.3%
Two or More Races	458	3.0%	3,204	3.0%	7,114	2.7%
Hispanic Origin (Any Race)	615	4.0%	3,694	3.4%	8,280	3.2%

2021 Race and Ethnicity	1 mile		3 miles		5 miles	
	Number	Percent	Number	Percent	Number	Percent
White Alone	13,651	86.9%	77,566	69.8%	181,733	67.9%
Black Alone	994	6.3%	25,842	23.3%	65,111	24.3%
American Indian Alone	65	0.4%	253	0.2%	658	0.2%
Asian Alone	152	1.0%	1,635	1.5%	7,302	2.7%
Pacific Islander Alone	1	0.0%	97	0.1%	181	0.1%
Some Other Race Alone	264	1.7%	1,772	1.6%	3,926	1.5%
Two or More Races	581	3.7%	3,902	3.5%	8,559	3.2%
Hispanic Origin (Any Race)	720	4.6%	4,402	4.0%	10,106	3.8%

Source: U.S. Census Bureau, Census 2010 Summary File 1. Esri forecasts for 2016 and 2021.



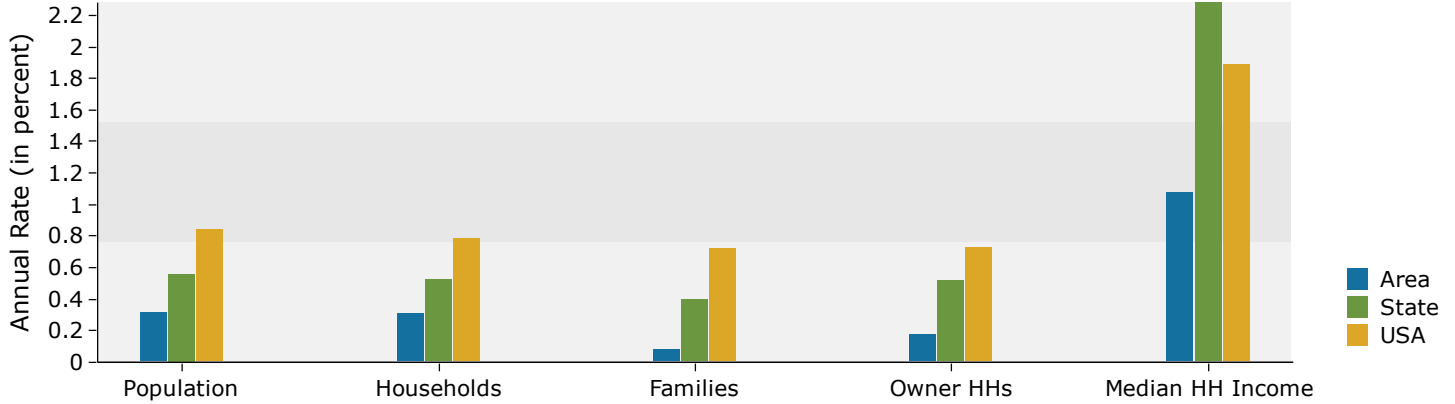
Demographic and Income Comparison Profile

Newport Pavilion
 Location
 Rings: 1, 3, 5 mile radii

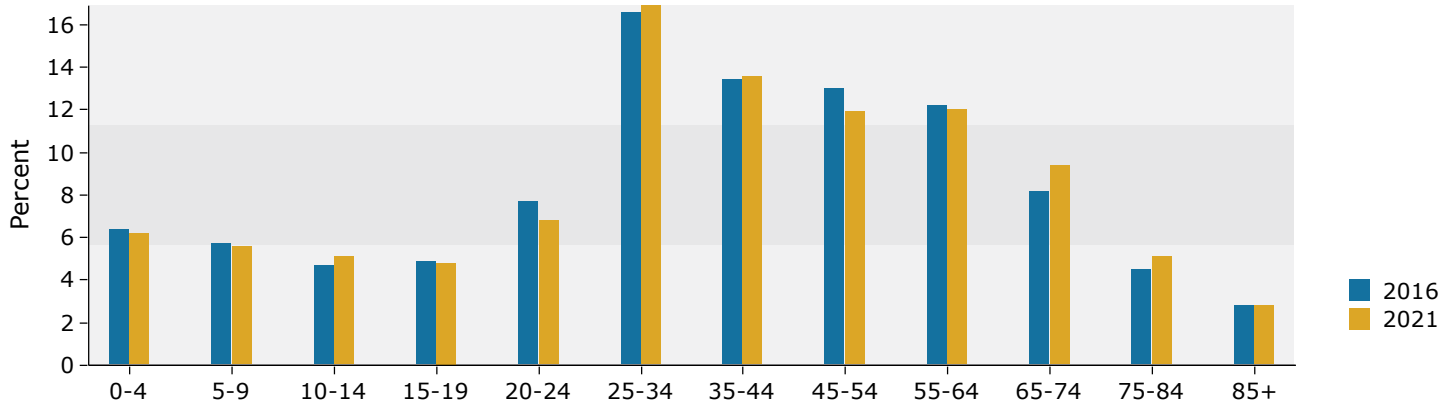
Prepared by Esri
 Latitude: 39.08932
 Longitude: -84.47746

1 mile

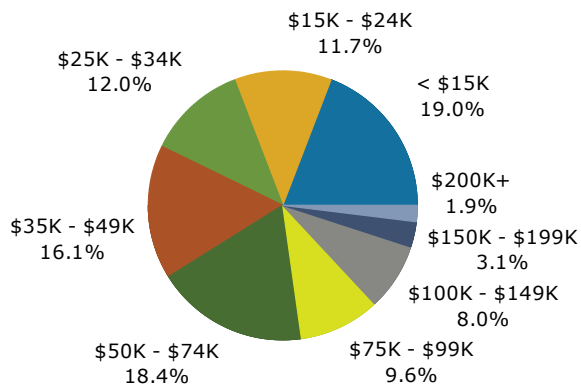
Trends 2016-2021



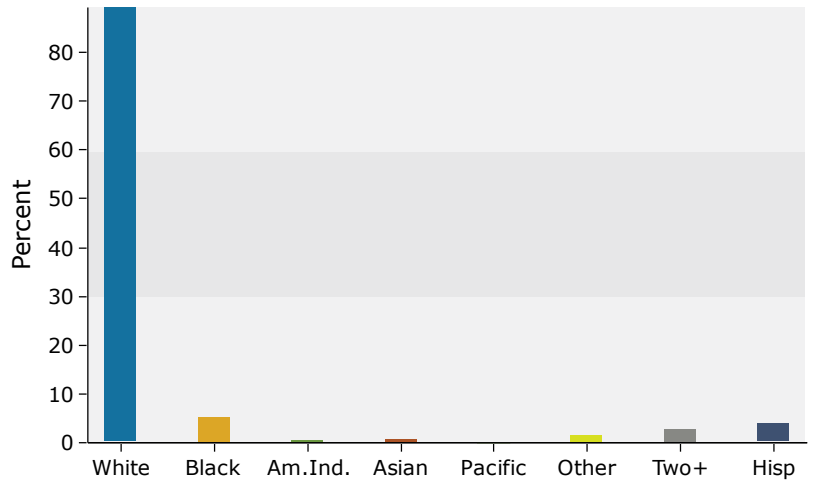
Population by Age



2016 Household Income



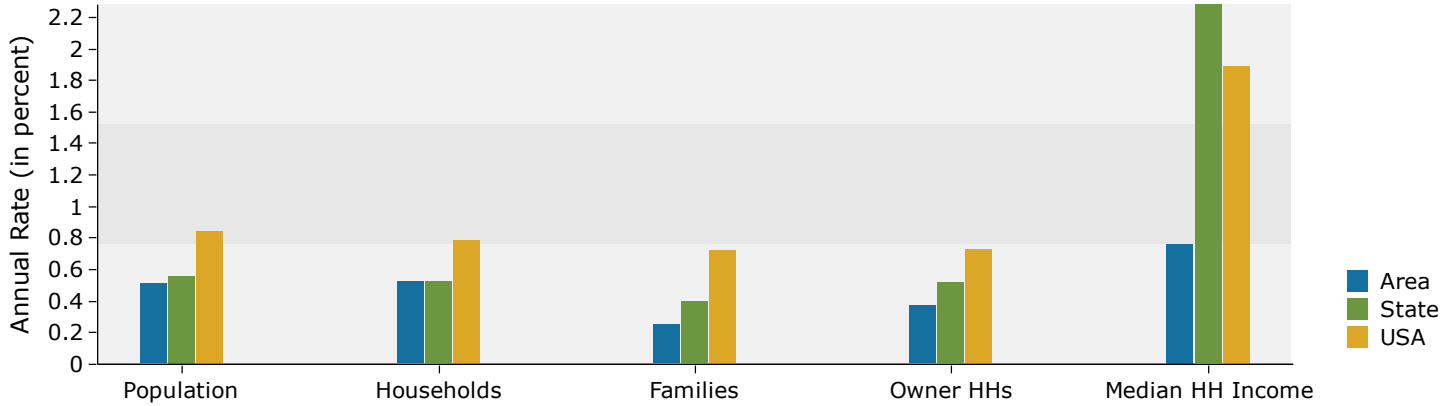
2016 Population by Race



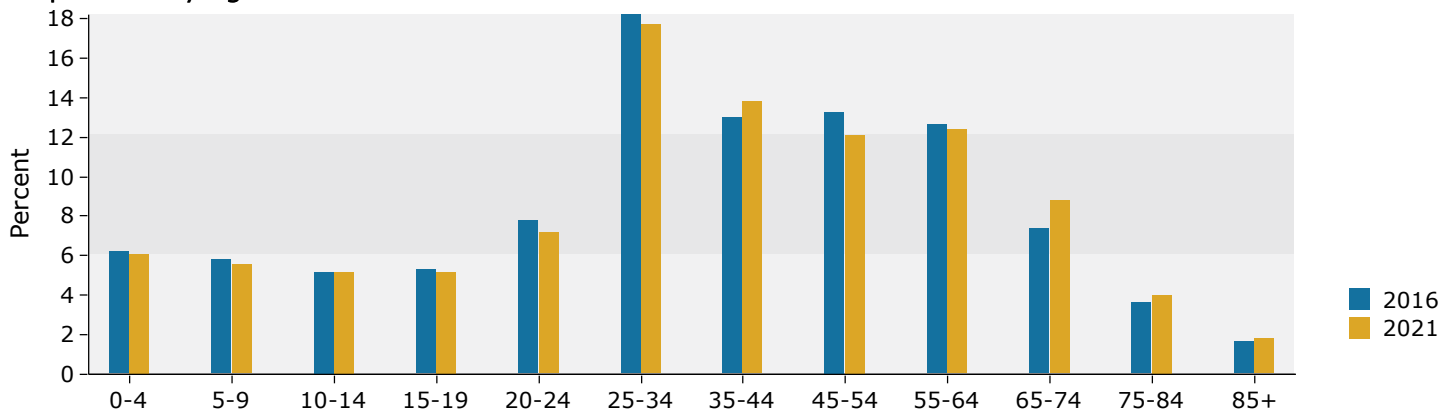
Source: U.S. Census Bureau, Census 2010 Summary File 1. Esri forecasts for 2016 and 2021.

3 miles

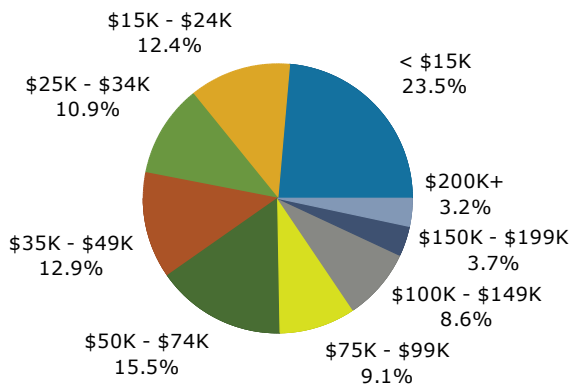
Trends 2016-2021



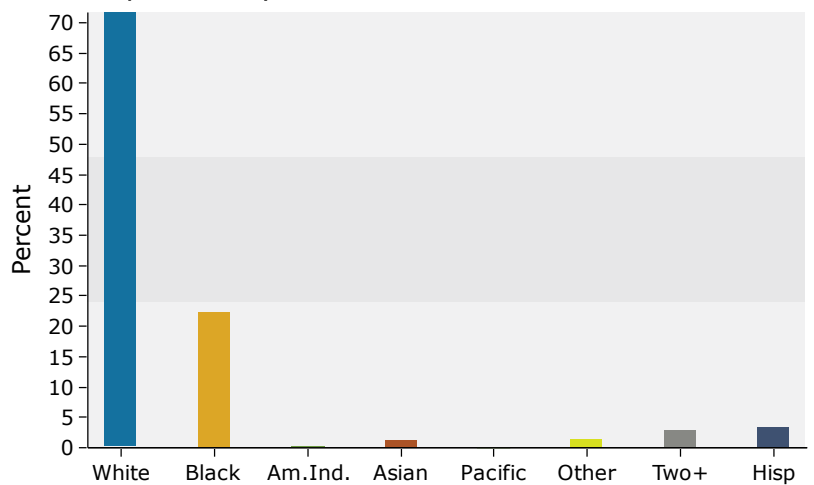
Population by Age



2016 Household Income



2016 Population by Race



Source: U.S. Census Bureau, Census 2010 Summary File 1. Esri forecasts for 2016 and 2021.



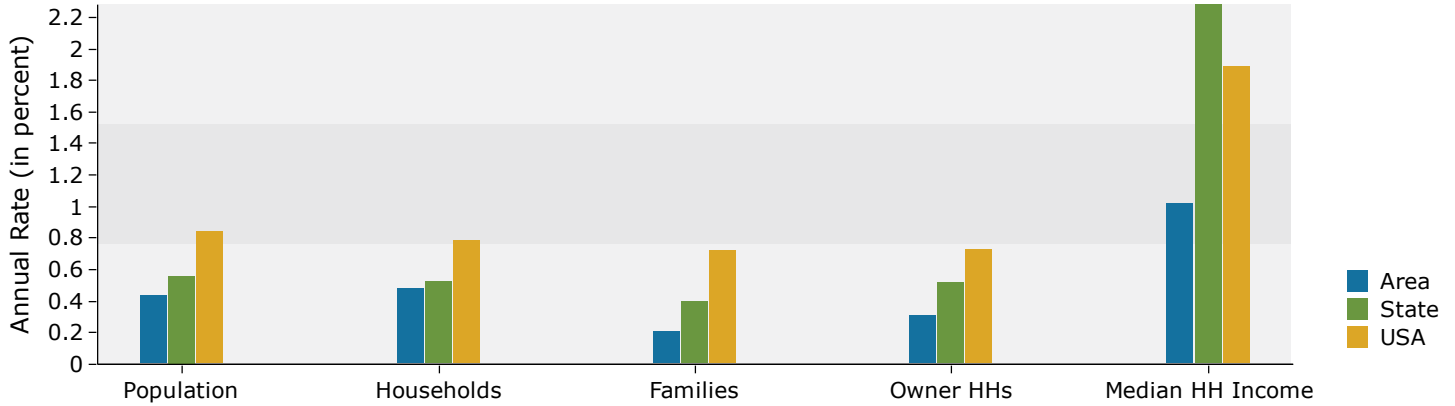
Demographic and Income Comparison Profile

Newport Pavilion
 Location
 Rings: 1, 3, 5 mile radii

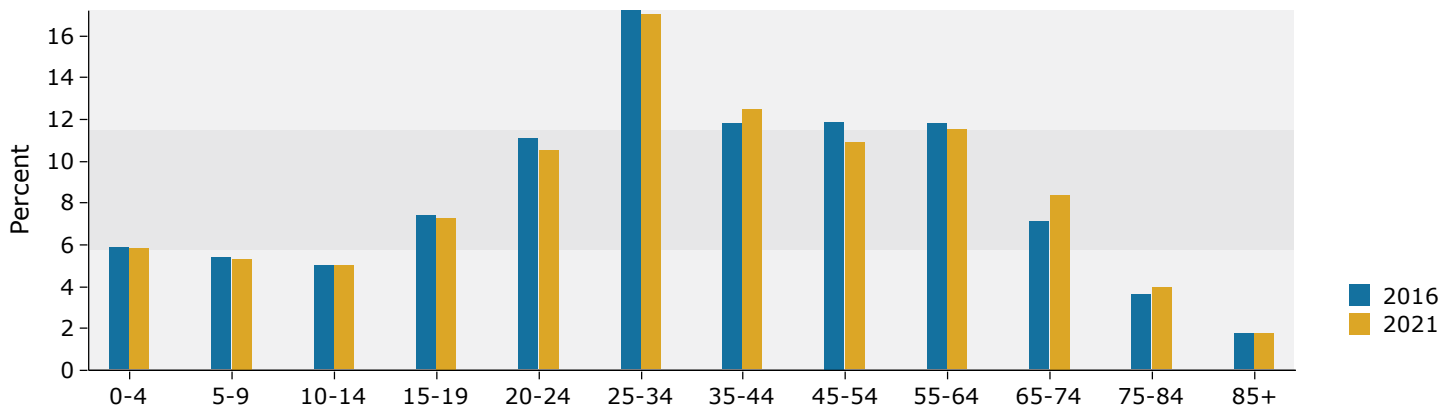
Prepared by Esri
 Latitude: 39.08932
 Longitude: -84.47746

5 miles

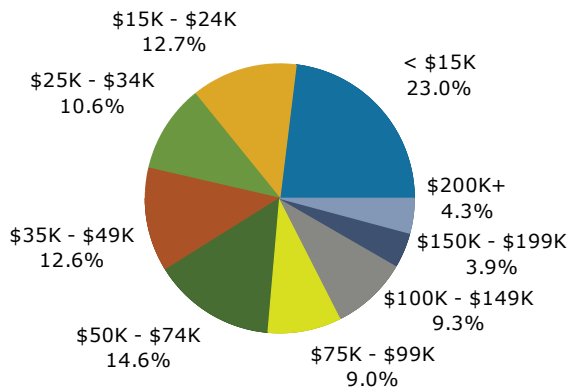
Trends 2016-2021



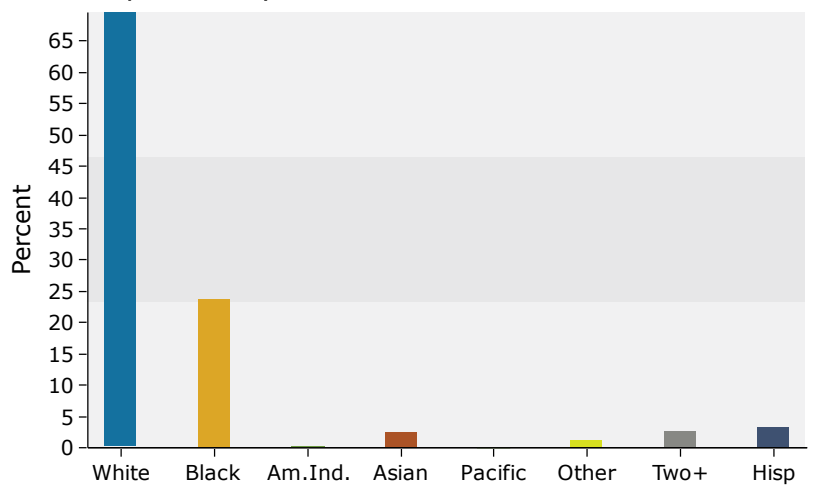
Population by Age



2016 Household Income



2016 Population by Race



Source: U.S. Census Bureau, Census 2010 Summary File 1. Esri forecasts for 2016 and 2021.